

Slate Belt Town Topics

AREA'S ONLY DAILY ONLINE PUBLICATION AT SBTOPICS.COM

Bangor Senior High School Honor Students



Valedictorian Andrew Bunn

Son of Marc and Kelly Bunn.

County Band, Drum Major, Marching Band, Pep Band, Pit Orchestra, Stage Crew, Student Government Committee Head, Honor Roll Award, Horvath Excellence in Science Award, PA Certificate of Merit, Boy Scouts Senior Patrol Leader, Build a trail for Mount Bethel Church, Clean and Blaze Trails for Kirkridge Retreat Center, Installed Bird Houses at Upper Mount Bethel Park, Portland Upper Mount Bethel Food Pantry, Richmond Lions Food Stand.

Plans to attend Embry-Riddle Aeronautical University and study Aerospace Engineering and Focus on Spacecraft Propulsion



Salutatorian Cayla Stiles

Daughter of Derik and Georganne Stiles

German Honor Society, Marching Band, Pep Band, St. Luke's Career linking Academy, Symphonic Band, County Band, First Honors, Pennsylvania Junior Academy of Science First Place, Head Start Program Washington Elementary

School - Plans to attend Wilkes University to study Biology and Pre-Med.

Whether you are buying or selling a home, finding the right Realtor is the most important step. You need a Realtor with knowledge of today's changing market; someone with integrity and service to you. We pride ourselves in all those qualities and invite you to visit us

EXPERIENCE ... EXCELLENCE



<http://www.slatebeltexecutives.com/>

Joe & Nancy Kessler
Corinne Groff & Colin Kessler
REALTY EXECUTIVES
31 W. First St. Wind Gap, PA 18091
610-863-8444



NEW VIRUS CASE REPORT - MAY 28

LOCATION	TOTAL CASES	NEW CASES
State	70,042	625
Northampton	3022	64
Monroe	1,311	1
Lehigh	3,719	20

Tasty Tuesdays

Trinity Lutheran Church, located at 4th and Broadway in Bangor, offers a free bag lunch program to children, their families and anyone in the community this summer. Tasty Tuesdays begins on Tuesday, June 2 and runs thru mid August.

Due to the Covid-19 pandemic, lunches will contain non perishable food items and will be available for drive-up/walk-up pick up in the large church parking lot.

Each lunch contains water, juice, healthy snack bar, chips, fruit/fruit cup, and a choice of a main food item such as canned soup/tuna/pasta and more. Call the church at 610-588-2023 to register.

HELP WANTED**Mt. Bethel Beverage**

#3 Mt. Bethel Plaza – Mt. Bethel, PA 18343
570.897.2337



- Part Time Day Shift
- Some weekends
- Some lifting required
- Apply in Person.
- Perfect for Retiree!

Must be 18 years of age or older

Replace /Clean Your Sponges

Sponges are a “bacteria hotbed”. Regularly replacing your sponges is a small task that goes a long way. Kitchen sponges hold a tremendous amount of bacteria, although it’s easy to let that slip your mind as you’re constantly using a sponge with soap and hot water.

Every couple of weeks, be sure to replace your sponge to ensure no bacteria is lingering around your sink and dishes.

If you’re short on cash, an alternative option is to toss your sponge into the dishwasher or microwave it for just one minute. As a food microbiologist at Drexel University, Jennifer Quinlan explains, “It doesn’t sterilize the sponge...but remember, the bacteria we want to kill are the ones that will make you sick.”

Erie Insurance®
Above all in service™ since 1925
Auto • Home • Business • Life

Some Things Just Belong Together

Save when you insure your home and auto with ERIE. You can have superb insurance coverage, outstanding service, great rates and discounts too. Take advantage of ERIE's multi-policy discount and we're willing to bet your tail will be waggin'. Also ask us about ERIE's other available discounts.

**Robin Tinsley**

Sabatino Insurance Agency Inc
17 S Robinson Ave
Pen Argyl, PA 18072-1765
ROBIN@SABATINOS.COM
610-863-6033

Discounts, rates and coverages vary by state and are subject to eligibility and applicable rates and rules. ERIE® insurance services are provided by one or more of the following insurers: Erie Insurance Exchange, Erie Insurance Company, Erie Insurance Property & Casualty Company, Flagship City Insurance Company and Erie Family Life Insurance Company (home offices: Erie, Pennsylvania) or Erie Insurance Company of New York (home office: Rochester, New York). Not all companies are licensed or operate in all states. Not all products are offered in all states. Go to Erieinsurance.com for company licensure and territory information. S1693 10/15

National Weather Service Forecast - May 29

Overnight

A chance of showers. Cloudy, with a low around 69. South wind around 5 mph. Chance of precipitation is 40%. New precipitation amounts of less than a tenth of an inch possible.

Friday

A chance of showers, with thunderstorms also possible after 1pm. Some storms could be severe, with damaging winds. Mostly cloudy, with a high near 81. South wind 5 to 10 mph. Chance of precipitation is 40%. New rainfall amounts between a tenth and quarter of an inch, except higher amounts possible in thunderstorms.

Friday Night

Showers and thunderstorms likely before 2am, then a chance of showers. Some storms could be severe, with damaging winds. Mostly cloudy, with a low around 65. Southwest wind 5 to 10 mph. Chance of precipitation is 70%. New rainfall amounts between a quarter and half of an inch possible.

Saturday

Mostly cloudy, then gradually becoming sunny, with a high near 79. West wind around 5 mph.

Saturday Night

Mostly clear, with a low around 50. Northwest wind 5 to 10 mph.

Sunday

Sunny, with a high near 66.

Hazardous Weather Risk

There is a risk for a few strong to severe thunderstorms and locally heavy rain on this afternoon and evening. The primary threat from these storms will be damaging winds.

PennDOT Road Work - May 26-29

US 22 Between: Lehigh County Line and New Jersey State Line. Daytime Restriction 07:00 AM To 03:00 PM: Please be alert for slow moving vehicles for Herbicide application. Start date: 5/26/20 Est completion date: 5/29/20

PA 33 Between: Interstate 78 and Monroe County Line. Please be alert for slow moving vehicles for Herbicide application. Start date: 5/26/20 Est completion date: 5/29/20 Restrictions in effect 07:00 AM To 03:00 PM

Interstate 78 Between: Lehigh County Line and New Jersey State Line. Daytime Restriction 09:00 AM To 03:00 PM: Please be alert for slow moving vehicles for Herbicide application. Start date: 5/26/20. Est completion date: 5/29/20

PA 33 Between: Interstate 78 and US 22. No restriction 05:00 PM To 11:00 PM for Shoulder work/bridge cleaning/sweeping. Start date: 5/26/20. Est completion date: 5/29/20

US 22 West Between: PA 191 and PA 512. Westbound lane restriction 09:00 AM To 02:00 PM. Start date: 5/27/20. Est completion date: 5/27/20

US 22 East. Between: PA 33 and 25th Street. Eastbound lane restriction 09:00 AM To 02:00 PM. Start date: 5/28/20. Est completion date: 5/28/20

PA 33 Between: US 22 and Northampton County Line. No restriction 05:00 PM To 11:00 PM. Start date: 5/26/20. Est completion date: 5/28/20

Food Distribution Today

Blessed to announce a Food Distribution today Friday May 29 from Noon - 2:30 pm.

Each bag contains 2 pounds of Ground Pork and one dozen eggs. You also will get a bag of assorted snacks.

First UMC of Wind Gap, 19 W. West St. Wind Gap PA. Contact Pastor John 570 426-0645

Celtic Youth Fiddle Competition

A Youth Fiddle Competition September 26, will be held at the Charlie Brown Ice House, Bethlehem at Celtic Classic Highland Games and Festival.

This unique fiddle contest primarily focuses on Celtic fiddling styles, including Irish, Scottish, Cape Breton, Shetland, and Galician. Two age categories divide the contest, and monetary prizes are given to the top 3 in each division.

Sunday, September 27, at 10:00 a.m. at the Celtic Heritage Hollow stage, a Celtic fiddle workshop for youth will be held at Celtic Heritage Hollow at Celtic Classic Highland Games and Festival.

For more information and to register, visit http://www.celticfest.org/celtic_classic_youth_fiddle_competition. For questions, please contact Marcie Mulligan at mmulligan@celticfest.org

PA 511 Traffic Alerts

- **Delabole Rd closed from American Bangor Road to Molasses Rd** for Bridge repair until mid June, 2020.
- **Roadwork on Belvidere Road both directions** 0 miles West of DePues Ferry Road, PPL. Lane restriction.
- **Damaged roadway on Five Points - Richmond Road** in both directions between Messenger St, Bangor, Park Drive and Sunset Drive. Lane restriction.
- **Roadwork on I-78 westbound** between Mile Post: 60.5 and Mile Post: 60.0. There is a lane restriction.
- **Roadwork on I-78 westbound** between .5 miles west of Exit 45: PA 863 - and .7 miles west of Exit 35: PA 143 - traffic disruption.
- **US 22 between PA 191 and 25th Street** Weekend restrictions Friday nights 9 PM thru Monday mornings at 6 am. Weeknight lane restrictions 9pm to 6am. (West bound first then East Bound)

Daily Weather Updates
sbtopics.com

Mt. Bethel Abstract

Complete Title Insurance Services

Susan McKean

President



3013 N. Delaware Drive

Mt. Bethel, PA 18343

Phone: 570-897-9047

Fax: 570-897-9048

Toll Free: 888-325-2433

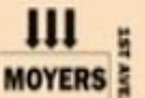
www.mountbethelabstract.com

MOYER

AUTOMOTIVE REFINISHING

7th Street

6th Street



IN-HOUSE PAINT MIXING & FRAME STRAIGHTENING

- OIL CHANGES
- EXHAUST
- BRAKES
- TIRES
- MORE



- FREE ESTIMATES •
- RUST REPAIR •
- AUTO BODY •
- COLLISION •
- PAINTING •

N.6th & 1st Ave., Bangor • 610.588.1600 • M-F (8-5) SAT (8-12)



Wind Gap
CHEVROLET-BUICK
199chevy.com

1043 S Broadway, Wind Gap, PA 18091-0248

Sales: (888) 624-8103 Service (877) 847-5755



CHEVROLET

Slate Belt Happenings

May 31

EBUMC Service

East Bangor United Methodist Community Church 136 W. Central Ave. East Bangor, PA will hold services Sunday May 31 - 10:00 a.m. Worship Service (Online) Bible Study will be held Tues., June 2 at 7:00 p.m..

Free Takeout Dinner

The East Bangor United Methodist Community Church welcomes you to a Free (TAKE-OUT ONLY) Bar-B-Que Pork Chop Dinner on Sunday, May 31st from 4:00-5:00 p.m. Please remember to wear your mask. The church is located at 136 W. Central Ave. (Rt. 512), East Bangor, PA. Questions? call 610-588-4453 or visit <http://ebumc.org/>.

June 2

Bible Study

East Bangor United Methodist Community Church 136 W. Central Ave. East Bangor, PA will hold (Online) Bible Study will be held Tues., June 2 at 7:00 p.m..

Tasty Tuesdays

Trinity Lutheran Church, located at 4th and Broadway in Bangor, offers a free bag lunch program to children, their families and anyone in the community this summer. Tasty Tuesdays begins on Tuesday, June 2 and runs thru mid August.

Due to the Covid-19 pandemic, lunches will contain non perishable food items and will be available for drive-up/walk-up pick up in the large church parking lot.

Each lunch contains water, juice, healthy snack bar, chips, fruit/fruit cup, and a choice of a main food item such as canned soup/tuna/pasta and more. Call the church at 610-588-2023 to register.

June 7

Baccalaureate Services

The Slate Belt Ministerium will be hosting a virtual Baccalaureate service on June 7 for seniors from Bangor Area School District, Pen Argyl Area School District and Faith Christian School.

Members of the class of 2020 are invited to

See HAPPENINGS page 10

TOM AHEARN
Licensed
Electrician

Ahearn Electric and Home Improvment

COMMERICAL & RESIDENTIAL ELECTRIC
Serving the Lehigh Valley & Poconos

Bangor, PA - 484-515-1134: e-mail: tfajr@epix.net

Web: ahearnelectrichomeimprovement.com



KLINE'S AUTO REPAIR

460 South First St. Bangor, Pa ~ 610-588-4140

www.klinesautorepair.com



AUTO REPAIRS

MAJOR or MINOR

Bruce J. Kline

Hometown
BRAND CENTER

APPLIANCE SALES, SERVICE & SUPPORT



**OVER 25
BRANDS**

CLICK HERE FOR STORE INFO - www.hometownsaves.com

Where to Eat

Napoli Pizza (610) 588-1455. 444 S 1st St, Bangor.
Open for pick up & delivery. <https://www.facebook.com/Napoli-Pizza-1448700338684153/>

Slate Belt Diner - open for take out. 610-452-9205,
370 Blue Valley Drive. <https://www.facebook.com/Slate-Belt-Diner-720340071701299/>

Daisy Family Restaurant

Daisy Family Restaurant's full menu, including ice cream, is available for take out only. Order by phone for curbside pickup and have your food brought to your vehicle, OR order at the counter and take it with you. NO ONE IS PERMITTED TO DINE INSIDE. 6589 Sullivan Trail Wind Gap, (610) 863-4044. Cash or credit still accepted. <https://daisyfamilyrestaurant.com>

Three Brothers Pizza

Three Brothers Pizza is now open in the former Plainfield Diner on Sullivan Trail. Pandemic restrictions prevent in-house dining, but at 11 am today takeout will be available. Call 610-863-4950 to order. <https://www.facebook.com/ThreeBrosPizzaWindGap/>

Mt. Bethel Diner

Mt. Bethel Diner is open for Take-Out only Monday - Sunday 8am - 7pm. Call ahead to order 570-897-6409, 2600 N. Delaware Drive, Mt. Bethel, Pa 18343. <https://www.facebook.com/pages/Mt-Bethel-Diner/153833271380910>

Takeout Food Tips

Getting takeout from your favorite restaurant for dinner? Use these tips to stay safe:

- Mobile phone order + pay online or by phone
- Accept take-out without in-person contact

Gap Diner Take-out

The Gap Diner in Wind Gap is open for take out and curb side delivery family meals packs. Specials include chicken parmesan serves 4-6, eggplant parmesan serves 4-6, spaghetti & meatballs serves 4-6, hamburger/cheeseburger kit serves 6. Check out their website for details at <https://www.facebook.com/Gap-Diner-251394928285680/>

Family & Friends Takeout

Family and friends country restaurant is open for take out at are window or curbside pick up. Full menu available. Call for daily specials 610-759-7477. They are located on route 512 in wind gap next to Albanese garden center. <https://www.facebook.com/pages/Family-and-Friends-Country-Restaurant-Inc/109628362406359>

Little Creek BBQ

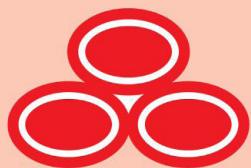
Little Creek hours for May are 3-7pm Tuesday through Saturday and Sunday's 12-5pm.

They have a limited meat selection, but they have all of their sides & desserts available and Sweet Tea.

Orders must be placed by phone - they will accept all forms of payment - cash, MC, Visa, Discover & AMEX. Orders will be curbside pick-up or delivery.

NO ONE will be allowed inside the building until restrictions for are lifted. Cash payments for curbside pick-up will be taken at the vehicle, delivery cash payments will be taken at the door. If you would like a "knock and drop" delivery - they prefer credit/debit over the phone. Daily Specials & Menu will be posted each morning by 8am. <https://www.facebook.com/Little-Creek-Bar-B-Cue-114984851845875/>

WHERE TO EAT continued on page 12



State Farm

Debbie Pettinari Agency
106 S. Broadway, Wind Gap, PA
610-881-4433

www.debbieinsurespa.com
debbie.pettinari.wz73@statefarm.com



Attention UMBT Residents - "It has been determined by the CDC that the virus can remain viable for hours to days on some waste materials. Advanced Disposal requires all waste be bagged in 32-gallon bags. Loose trash will not be picked up. For containers, all trash must be bagged in the container. Recycling must remain loose in containers. Effective

"**Bangor Memorial Park** equipment and facilities are not able to be disinfected. Residents are advised not to use park facilities. Thank you for your cooperation as we all work to reduce the impact of this virus" - *Brook Kerzner, Bangor Mayor*

**Daily COVID 19
Updates sbtopics.com**



**SERVING THE
SLATE BELT &
LEHIGH VALLEY**

JOHN T. SCHIMMEL

PUBLIC ACCOUNTANT

1400 NORTHAMPTON ST. EASTON, PA 18042

Phone: (610) 253-4000 q Fax: (610) 258-FAX4

E-Mail: john_schimmel@yahoo.com

**6 PACKS
FOR SALE**

**MT. BETHEL
BEVERAGE**
Beer Soda Lottery Ice Tobacco



www.mt-bethel-beverage.com
3 Mt. Bethel Plaza, Rt. 512
Hours: Mon-Thurs 9-8:30, Fri-Sat 9-9
Sunday 10:00-5pm - 570-897-BEER



**PROTECT WHAT
MATTERS MOST**
You can't always
avoid a rainy day



Life insurance can help you achieve your financial goals. It can also help protect the ones you love when they need it most. Learn how you can support and protect your family and your assets.

Jewel Williamson-Burns

CLU®, FIC
Financial Associate

18 Mauch Chunk Street
Nazareth, PA 18064

610-746-0344



Insurance products issued or offered by Thrivent Financial, the marketing name for Thrivent Financial for Lutherans, Appleton, WI. Not all products are available in all states. Thrivent Financial representatives are licensed insurance agents/producers of Thrivent. For additional important information, visit Thrivent.com/disclosures.

Appleton, Wisconsin • Minneapolis, Minnesota • Thrivent.com • 800-847-4836

27416A R3-14

**DALE ALBERT'S
GARAGE Inc.**



- Oil Change •
- Tires - Tune-Ups •
- Wheel Alignment •
- Major or Minor Repair •
- PA Emissions and Inspection •



A to Z Performance Engines

19 Blue Valley Drive, Bangor
610-588-1902 Fax 588-1887
stodd86@frontier.com

Plainfield Township - outdoor facilities remain open, however, Plainfield personnel can't sanitize the apparatus and playground equipment. They ask you to use common sense when bringing children to their facilities and not congregating in groups of five (5) or more as per the Centers for Disease Control Guidance.

East Bangor Fire Co. Needs

Due to the COVID-19 Virus the East Bangor Vol Fire Company is asking residents and business for items they need of to keep their crews safe. Items include:

Hand Sanitizer, Lysol spray, Tyvek suits, Lysol/Clorox wipes, Isopropyl Alcohol(rubbing alcohol) minimum 91%, Pure Aloe Vera gel, and Masks.

Call 610-462-1132 to make donation. Any help is appreciated! The Fire Co. can pick it up.

PASD School Meals

Students and parents are welcome to pick up meals by entering the bus loop located in the front of the Wind Gap Middle School between the hours of 11:30-1:00. The distribution will be curbside. No admittance to the building is permitted.

Bangor Pool Not Opening

According to statement on Facebook, "Regrettably, we have made the very hard decision not to open Memorial Park Pool for the 2020 summer season due to ongoing COVID-19 health and safety concerns and restrictions."

Mental Health Matters

Your mental health matters. If you need help coping or if you're experiencing a mental health crisis, please reach out for support:

Telephone National Suicide Prevention Lifeline: 1-800-273-8255

Military medal Veterans in Crisis: 1-800-273-8255 + press 1

Speech balloon Crisis Text Line: Text PA to 741-741

Car Show Cancelled

The 37th annual Wind Gap Car and Cruise Show scheduled for this summer has been cancelled due to the pandemic.

Washington Twsp Open Burning

Due to the Federal, State and County Disaster Declarations in place Washington Twp Fire Co. will restrict open burning to rainy days only with permission. Thank you for your understanding.

Pennsylvania Tax Day Delayed

Pennsylvania has now followed the federal government in extending Tax day deadlines

Daily COVID 19 Updates sbtopics.com

Get to know our professional, friendly team with a "Welcome" **FREE FIRST EXAM** at our convenient location!

SPECIAL OFFERS:

- Senior Citizen Tuesdays (10% OFF non-discounted services*)
- VCA Care Club® Wellness Plans**

VCA AVH ANIMAL HOSPITAL

1027 Blue Valley Drive, Pen Argyl, PA 18072

610-863-7111 VCAavh.com



*Free initial health exam for new clients only. Not to be combined with any other offer. Not good towards boarding, grooming, prescription and non-prescription medication, and retail items. Not good towards emergency and/or specialty veterinary services. Coupon good for up to two pets (dogs or cats only) per household. Redeemable only at a general practice VCA Animal Hospital. For pet owners who are aged 18 and older. Offer expires on 12/31/2016. Cashier Code: 700.500. ** VCA CareClub® Wellness Plans are preventive pet healthcare plans and are not insurance plans. VCA CareClub® Wellness Plans do not cover any services which are not specifically identified in the VCA CareClub® Wellness Plan purchased.



BUSINESS HOURS

Mon 8:00 AM - 8:00 PM • Tue 8:00 AM - 6:00 PM

Wed-Thu 8:00 AM - 8:00 PM

Fri 8:00 AM - 6:00 PM • Sat 8:00 AM - 2:00 PM

These Organizations Need Your Help

Recovery Revolution

Primary Contact: Jana Morris

Contact Information: (610) 599-7700

Current Need(s): Hand sanitizer, Lysol spray (aerosol), disinfecting wipes, box of disposable masks

Slater Family Network Foundation

Primary Contact: Patti Damour

Contact Information: (610) 599-7019 or
damourpa@bangorsd.org

Needs: Masks, gloves, Lysol cleaning supplies,

Lehigh Valley Health Network

Visit LVHN.org/helpfightcovid to find a drop-off location near you. Needs: Face shields, goggles, hand sanitizer, cleaning supplies and disinfectant, Isopropyl alcohol, Lysol and Clorox (including wipes), N95 masks, surgical masks, vinyl gloves

Gracedale Nursing Home

Primary Contact: Gracedale Volunteer Coordinator

Contact Information: (610) 829-3686

Current Need(s): PPE items

Miller-Keystone Blood Center

Contact Information: <https://www.giveapint.org/>

Current Needs: Blood donations



Hon. Leonard N. Zito

Judge: Court of Common Pleas Northampton County (Ret.)

Wills - Estate Planning - Legal Documents - Transactions - Counselling

Civil and Criminal Court Practice

641 Market Street

Bangor, PA 18013

610-588-0700

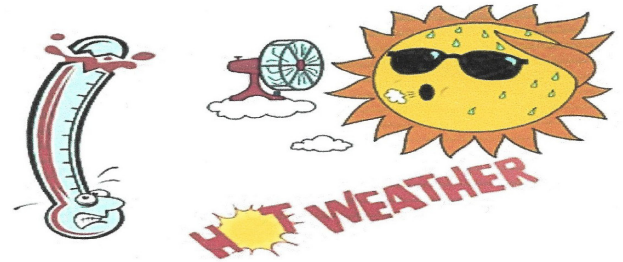
610-691-7900

Spring Time Special!

A/C Tune-ups Only

\$35.00

OFFER ENDS 06/01/2020



**DON'T MISS THIS GREAT DEAL! CALL
NOW FOR YOUR APPOINTMENT!**

C J A Mechanical

484-282-0194

WIND GAP^{community} PHARMACY

FREE DELIVERY

- > Personalized Service
- > One on One Counseling
- > Free Blood Pressure and Sugar Check
- > We Accept All Major Insurances Including Medicare & Medicaid

Free Bubble Packs

610.881.4260

HAPPENINGS continued from page 2

submit 3-5 minute recordings of a Gospel-related talent or their testimony for inclusion in the service. Submissions should include the student's name and school they are from.

Two submissions per school will be included in the service and one student from each school will receive a \$200.00 scholarship. Submissions should be sent to sbbaccalaureate@gmail.com

June 14

Chicken BBQ at Christ Lutheran

Christ Evangelical Lutheran Church 703 S. Delaware Dr. (Route 611), Mt. Bethel (Stone Church) will hold a Take Out Chicken Bar-b-cue on Sunday, June 14th.

You must pre-order your meal with pick up between 1pm and 2:30pm.

The meal includes a delicious bar-b-cue half of chicken, potato, roll/biscuit, spiced cabbage and dessert. The cost is \$13.

To order, please call Chrissy at [610-588-0809](tel:610-588-0809) by June 8.

August 16

Vendor and Craft Fair

The Washington Township Volunteer Fire Company is having a Vendor & Craft Fair on Sunday August 16th, 2020 (new date) from 9am to 3pm. Food and Drinks will be sold by the fire company.

This is an outdoor event and it will be held whether rain or shine. If you are interested in a space contact Brett Morrison at 484-542-9517, Aundrea Morrison at 610-984-7101, or email at bdjm987@gmail.com

September 5-7

Bangor Yard Sales

Get ready for the Bangor Borough town-wide yard sale taking place Labor Day weekend, Sept. 5-7! The Borough waives the yard sale permit and you have the opportunity to find some treasures and release your unused items to someone who can use them.

September 12

Bangor Car & Bike Show

Rev up your engines for plenty of prizes, trophies and fun for the entire family! The Bangor Car & Bike

show and competition is back on Broadway in historic Bangor on Saturday, September 12 from 10am - 3pm (rain-date Sunday, September 13)..

Goody bag & tshirt pre-registration: Sign up your car or bike early and save \$5 on the entry fee PLUS get a really cool goody bag & commemorative tshirt! Pre-registration is \$10 by 6/12 at hbbapa.org. Pre-Registration does not reserve your spot in the show, but gets you a goody bag and tshirt. Goody bags and tshirts are limited to the first 50 pre-registrations.

Car & bike show competition entry: If you'd like to enter your vehicle in the competition, please arrive on September 12 to Main & Broadway between 8am and 9:45am to enter the competition. Be sure to bring your pre-registration form OR register day-of for \$15. Space is limited, get there early so you don't miss out on entering your vehicle into the competition!

Car & bike show sponsors: They are presently accepting prize and award sponsorship. Please visit <https://www.hbbapa.org/car-show.html> to download



SBNR Needs Masks & Gowns

Slate Belt Nursing and Rehabilitation Center. is in desperate need of masks and long sleeve gowns.

They currently have no patients or staff testing positive for coronavirus, and want that to continue.

The majority of their patients are elderly and arrive there when they are released from the hospital, but not well enough to go home.

Portland Mount Bethel Food Pantry

111 State St, Portland, PA 18343. (570) 897-5847

Mondays 10am-11:30 a.m. and 6pm-7:30 p.m.

Curbside service is available.

Pen Argyl Parking Meters

Parking Meter Enforcement in Pen Argyl has been suspended.

Mass Suspension

The Allentown Catholic Diocese has extended its suspension of Masses through Holy Week, meaning churches will be empty on Easter — the holiest day on the Christian calendar, commemorating the Resurrection of Christ

Blood Donations Needed

There is a critical need for blood and platelets across. If you would like to #donateblood, you can find the closest location here: <http://rcblood.org/2UyPOkcrc>

Mission of Love Food Pantry

555 N Main St Bangor, PA., 610-599-0369

Tues 9 a.m. to noon through the COVID-19 mitigation (Offering drive up service only).

United Way

United Way of the Greater Lehigh Valley

Dial 2-1-1 or 855-501-6785 Bangor Office - 610-588-8011. Mon-Fri 9 a.m. to 5 p.m.

Johnsonville Farm & Garden Mkt

Closed Mondays for the time being. Open Tuesday through Saturday 8-3, Sunday 8-1. Call (610)599-0163 and they will be glad to answer your questions.

PA 211

PA 211 has text auto-notifications that provide the latest assistance and crisis information. To receive updates - text PACOVID to 898-211

BASD Student meals available via curbside pickup between 10:00 am and 12:00 p.m. Not on weekends. e-mailed orders through meals@bangorsd.org by 5:00 p.m. the day prior to pick up.

Slate Belt Senior Center Open M-F 11-12:30 For Meal Service OnLY

Portland Borough Playground - closed

Public Libraries - closed until further notice. Bangor patrons may use drop box. No fines. Nothing overdue.

REAL ID enforcement deadline extended by one year to Oct. 1, 2021, in light of the coronavirus pandemic.

Main Street Market

Open 9 am - 6 pm, 7 days a week, effective Thursday, March 19 From 9 a.m. - 10 a.m. they will hold special shopping hours for shoppers 65 and over, the immune compromised as well as pregnant women.

Waste Management

Please bag all trash and place in your trash can or Toter. Please do not leave any trash items loose in these containers.

Recycling should be loose. They can't collect bagged recycling since plastic bags tangle the machines

RICHARD M. SHAPLIN

FINANCIAL SERVICES



*Richard
Shaplin Sr.*



*Richard
Shaplin Jr.*

610-559-5197

308 Spring Garden Street • Easton, PA 18042

Securities offered through Royal Alliance
Associates, Inc., Member FINRA, SIPC.

Where to Eat

Sal's Pizza

Sal's Pizza 487 E. Moorestown Road, Wind Gap. 610-863-7665. Open daily 11am -9pm. Closed Tuesdays. <https://www.facebook.com/salsandhome/>

Doughboys

Original Doughboys Pizza and Restaurant, 230 W. Moorestown Rd, Wind Gap. 610-759-3776 <https://www.facebook.com/Original-Doughboys-Pizza-Restaurant-116182055070460/>

Pen Argyl Pizza

Pen Argyl Pizza 510 E. Main St, Pen Argyl. 610-863-6670. M-Sat (11-10) Sun (10-10) <https://www.facebook.com/pages/Pen-Argyl-Pizza/114149941950498>

512 Restaurant

512 Restaurant 2 East Pennsylvania Ave, Pen Argyl. Tues-Sunday, Curbside and delivery. 610-881-4540 <https://www.facebook.com/512-Restaurant-224862864746697/>

Detzi's Tavern

Detzi's Tavern 570 North Lehigh Ave., Wind Gap. 863-9882. Open 4 -7:30. <https://www.facebook.com/detzistavern/>

Slate Pub

Slate Pub 509 E. Main St., Pen Argyl. 610-881-4700. Opens 11am. <https://www.facebook.com/slatepub/>

Broadway Pub

Broadway Pub 62 Broadway, Bangor. 610-452-9226. COVID Hrs. Tues-Sun (2-8) <https://www.facebook.com/Broadway-Pub-105855556106/>

Five Points Grill & Pub

Five Points Grill & Pub 1001 Mt. Bethel Highway, Mt. Bethel. 610-588-1773. Thurs-Sat. Order online only. <https://www.facebook.com/5PointsGrillPub/>

Restaurant Week

Coming this July 5-12! the Slate Belt Chamber of Commerce is asking the participating restaurants to pick a local business that will offer a discount. This will expand restaurant week to include retail stores. When you visit a restaurant during restaurant week, save your receipt and visit that participating retailer, show your receipt to receive a discount. If interested in participating in restaurant week call the office. Their display racks are getting a bit low with your business cards and flyers. Stop by today and update your information.

These Restaurant listings are free because of the limitations placed on eateries due to the Coronavirus pandemic. If you have any other listing you want to add contact Slate Belt Town Topics sbtopics@ren.com or call 610-863-1988

MT. BETHEL DINER
is
OPEN
for
Take Out
ONLY
(570) 897-6409
 MONDAY - SUNDAY
 8 AM - 7 PM

CALL TO ORDER AHEAD!

(570) 897-6409
 2600 N Delaware Dr
 MT. Bethel, PA 18343

Tuscarora Quarantine Hosts

Tuscarora is here to help! During the COVID-19 health crisis Tuscarora is opening its doors to first responders and medical professionals who need to be in quarantine.

Visit the Tuscarora website at tuscarora.org/covid-inquiry if you need to be in quarantine due to symptoms or self-imposed for the safety of those you love.

Your stay is free of charge as Tuscarora's way to

**Daily COVID 19
Updates sbttopics.com**

St. Luke's Care Now Open

St. Luke's Care Now – Wind Gap, 487 East Moorestown Road Wind Gap, 484-526-7850

Monday through Friday: 7:30 am – 10:30 pm

Saturday and Sunday: 8 am – 8 pm

KN95 masks for sale.

Wind Gap Community Pharmacy has KN95 masks for sale. They come either individually for \$5.50 a mask or a pack of 10 for \$55.00. Limited quantity!

They still have masks for free for the community along with free hand sanitizer. Located at 31 West 1st Street Wind Gap M-F 8-6:00, Sat 8 -1610-881-4260.

Trinity Evangelical Lutheran Church, Bangor -
Online services only.

HUB Teen Center - closed until further notice

St. Luke's Coronavirus hotline - at 1-866-STLUKES (785-8537), option 7 or email us at coronavirus@sluhn.org

Weona Park

Weona Park is closed to all practices of any athletic teams. Equipment and pavilions will not be sanitized.

It is strongly advised that you do not utilize the park until further notice.



3RD ANNUAL BANGOR CAR & BIKE SHOW



on BROADWAY



(raindate 9/13)

10am to 3pm in Downtown Bangor



**ENTER YOUR CAR OR BIKE
BETWEEN 8am and 9:45am
on September 12th**

SPACE IS LIMITED, please arrive early

**VISIT HPPAPA.ORG
for more info**

or contact Norm at Dinky's 610.588.1131



TROPHIES, PRIZES, & VENDORS!

Donations for St. John's Cemetery

Donations for St. John's Cemetery in Bangor are being accepted for maintenance. You can mail them to St. John's Cemetery c/o Carol Hummel, 136 Messinger Street, Bangor, Pa 18013.

"Weona 100" Requests

PenArgyl Borough requests volunteers, personal stories from Community for "Weona 100." A joint committee of borough officials and residents are planning a weekend of "Weona 100" festivities and activities on June 19-20, 2020. For more information about the Weona Park 100th Anniversary plans, contact Roberta Cowley at 484-695-2994 or email Weona100@gmail.com.

Heritage Center Monthly Schedule

June 18th @ 7:00 PM: Preservation Awards by Karen Brewer. July 9th @ 7:00 PM: 100th "Anniversary of Weona Park" by Walter Cole. August 13th @ 7:00 PM: "Anniversary of V-J Day" by Russ Stout. September 19th @ 7:00 PM: "1936 Slate Centennial Parade Video". October 8th @ 7:00 PM: Haunted Heritage Program Sundays: November 8th @ 2:00 PM: "Pearl Harbor Remembered" by Jim Paynter. December 13th @ 2:00 PM: "Great Slate Belt Trivia Contest" by Marc Blau

Fishing Rods and Tackle Available

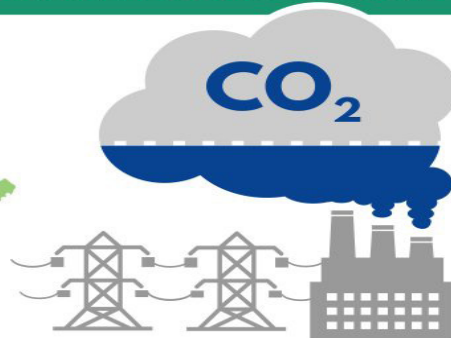
When: Monday thru Friday, 8:00am to 2:30pm

Where: Jacobsburg Visitor Center, 400 Belfast Road, Nazareth

Borrow fishing poles and tackle to use in Jacobsburg's creeks! To borrow equipment, you must provide a driver's license or other form of state issued identification. Persons age 16 and older must possess a current fishing license to fish. Adults can help children under 16 fish without a license. Bait is not provided. For more information call 610-746-2801 or email jacobsburgsp@pa.gov.

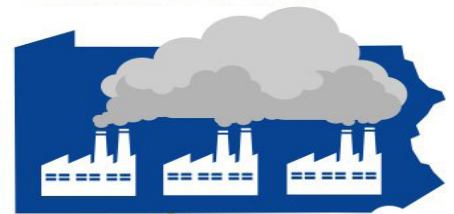
PA Participation in the Regional Greenhouse Gas Initiative (RGGI)

RGGI is a partnership between Northeastern and mid-Atlantic states...



...Designed to cap and reduce carbon emissions from fossil fuel fired power plants.

The electricity sector is the 2nd leading source of Greenhouse Gas Emissions in PA.



By 2025



By 2050

Participating in RGGI will help PA reach our greenhouse gas emissions goals...



45%

Since 2005, RGGI states have significantly reduced their power sector CO₂ pollution.



Daily Updates sbttopics.com

Scholarship Awards

The Slate Belt Chamber of Commerce congratulates the following students chosen to receive the 2020 Slate Belt Chamber of Commerce Scholarship Awards:

- Lindsay Hoffer, Bangor High School
- Derek Lasher, Career Institute of Technology (Bangor High School)
- Megan Guthrie, Pen Argyl High School
- Jonathan Ruth recipient of the Frederick R. Curcio Jr. Award of Bangor High School/CIT.

Pen Argyl Borough

Pen Argyl Borough office staff will be conducting business but there will be no face to face interactions. If you have general business with the Borough, please call 610-863-4119 or email the department you might need:

secretary@penargylborough.com (general matters, sewer billing questions and final sale certifications).
admin@penargylborough.com (general matters, feral cat questions and rental registrations).

manager@penargylborough.com (all of the above and any other questions you might have regarding the Borough.)

Greenhouse Free Delivery

Thomas Greenhouse in Mount Bethel offers Free Deliveries to Portland, Mt Bethel and Bangor. 484-661-6553 Rt 512 between East Bangor and Mt. Bethel

Waste Management

Please bag all trash and place in your trash can or Toter. Please do not leave any trash items loose in these containers.

Recycling should be loose. They can't collect bagged recycling since plastic bags tangle the machines.

PennDOT Extends Photo IDs

PennDOT has announced it will use existing photos on file for customers who renew their driver's license and identification card. All customers who renew online or through the mail will receive a new product using the most recent photo that exists in PennDOT's system. No camera cards will be issued to these customers, and they will receive their new product by mail within 15 days.

The renewal process is complete when the final product is received.

People who renewed before May 10 will receive a camera card in the mail and must visit a photo license center. Non-U.S. citizens must also visit a driver's license center in person to complete a transaction. For a list of reopened locations, visit www.dmv.pa.gov. Expiration dates on driver's licenses, photo ID cards, learner's permits and camera cards scheduled to expire from March 16 through May 31 have been extended until June 30. For more information and an update on REAL ID products.

PennDOT also announced an extension of expiration dates for vehicle registrations and safety and emission inspections. Items scheduled to expire between March 16 and May 31 are now extended through June 30. Persons with Disabilities parking placards scheduled to expire from March 16 through May 31 are also extended through June 30.

Weona Park Closed

According to a news release by the Slate Belt Regional Police Weona Park in Pen Argyl is now closed to all visitors

In an e-mailed statement SBRPD said, "After several attempts to educate users of Weona Park to please heed the warnings regarding "social distancing" and restrictions on public gatherings, Pen Argyl Borough must take the step to close Weona Park to any visitors. It is extremely unfortunate that certain individuals have made decisions to continue to place others in jeopardy amid concerns about the potential spread of COVID-19.

All portions of Weona Park are now closed to the public. If found in violation of the emergency closure, you will be prosecuted to the fullest extent of the law."

Mount Bethel COVID Tests

Mt Bethel Pharmacy has all things covid readily available. Hand sanitizer, masks, gloves, zinc, vitamin c. And they are getting in covid testing kits to do the testing in the pharmacy. No script needed!

Call them for more info! 570-582-2027

Weona Park Centennial

A Centennial book is being written to commemorate the 100th Anniversary of Weona Park in Pen Argyl.

Anyone with fond memories or interesting stories should send them to Walt Cole at wrcole3@gmail.com. This would include any information from your parents or grandparents. Perhaps a grandparent or great-grandparent helped to build the park, or worked on a WPA project during the Depression. Perhaps you worked at the park, were a life guard or had an interesting experience.

Stories about sporting events, swimming, or any activities would be of interest. They are also interested in pictures of family reunions, church gatherings or other organizations having picnics at the park.

Do you have any pictures of the kiddie Ferris Wheel, train or cars that you would be willing to share?

They are also looking for pictures of the clay tennis courts, the old miniature golf course, the band shell and events at the athletic field. Please check out those old photo albums for memories to share.

Talking and Breathing May Spread The virus

People resistant to social distancing may reconsider that thought after a prestigious scientific panel told the White House Wednesday night that research shows the coronavirus can be spread not just by sneezes or coughs, but also just by talking, or possibly even just breathing.

“While the current [coronavirus] specific research is limited, the results of available studies are consistent with aerosolization of virus from normal breathing,” according to the letter, written by Dr. Harvey Fineberg, chairman of a committee with the National Academy

of Sciences.

Fineberg said that he will start wearing a mask when he goes to the grocery store.

Several other experts are now talking about wearing masks every time you interact with the public during essential visits to places like your local grocery store or pharmacy.

Considering that people with no coronavirus symptoms at all can carry the virus, a simple conversation with someone like that could spread the virus to you if you are less than six feet apart.

PPL Waives Late Fees

PPL Electric Utilities has waived all late payment fees and announced it will not cut service. PPL has several programs available to help customers having a hard time paying their bills: OnTrack offers a lower, fixed monthly bill and debt forgiveness for customers who make 150 percent of the poverty level or less. CARES can help customers experiencing a temporary hardship. Calling [1-800-358-6623](tel:1-800-358-6623)

Met-Ed Suspends Shut-offs

Effective immediately, Met-Ed is temporarily discontinuing power shutoffs for customers who are past due on their electric bills. FirstEnergy, Met-Ed's parent company, will continue to monitor the coronavirus response situation and adjust the shutoff policy in the future as circumstances develop.

Met-Ed encourages customers who are having difficulty paying their electric bill to contact its customer service department at 1-800-545-7741 to discuss customer assistance programs.

Roseto Park Closed

Due to the mandates in place by Governor Wolf regarding COVID-19, “Stay at Home”, six foot social distancing, social gatherings of ten or less in the red phase and 25 or less in yellow phase Roseto Borough Council at their regular monthly meeting approved the closure of the Roseto Borough Park until Northampton County is open in the “green phase” of the Governor's reopening process.

MASK WEARING TIPS

DO:

- ✓ Wear a mask when you leave home
- ✓ Make sure it covers your nose and mouth
- ✓ Be sure that you can breathe through it
- ✓ Continue practicing social distancing

DON'T:

- ✗ Touch mask while wearing it
- ✗ Touch the front of mask when removing it
- ✗ Use on children under 2
- ✗ Wear if you have trouble breathing

BEHAVIORAL HEALTH

SUPPORT & REFERRAL HELPLINE

1-855-284-2494 • 724-631-5600 (TTY)



Avoiding Foggy Glasses for Mask Users

1. **Adjust the ties** or the ear loops so the mask fits snugly against your face. If the air is going out the top, you don't have your mask on correctly. Most of your breath should be going through the mask. If you feel the air going in or out around the mask, tighten the ties.

2. **Athletic tape** is also a possibility, however, if you wear the same mask day after day, the tape may harm the mask.

3. **Soapy water.** A British surgeon published a paper in 2011 showing that washing your glasses with soapy water and letting them air dry can help. Soap acts as a surfactant — which stands for surface active agent — and the soapy water leaves behind a thin film that stops the water molecules from forming droplets that lead to fog.

4. **You can buy commercial anti-fogging wipes** and sprays, but it could get expensive. One brand, FogTech Dx, sells on Amazon for \$30 for 20 wipes — or about \$1.50 per wipe. One treatment is supposed to last for three to five days

Wipe and sprays may be difficult to buy right now. Some sites we went to suggested you that they are on back order. Other sources say it may 2-4 weeks to get them online. However, if you know someone who is an avid swimmer he or she may have some.



Home Heating Assistance

LIHEAP is a federally funded program that helps individuals and families pay their heating bills through home heating energy assistance grants. It also provides crisis grants to help in the event of an emergency or if a resident is in danger of losing his or her heat due to broken equipment, lack of fuel or termination of utility service.

The income eligibility guidelines for LIHEAP are set at 150% of the federal poverty income level. For example, the income limit for an individual is \$18,735; for a couple, the limit is \$25,365; and for a family of four, it is \$38,625.

Residents may apply for LIHEAP online or by contacting the County Assistance Office in their county of residence.

Support Group For Vets & First Responders

A new confidential support group for veterans and first responders is available at A Clean Slate on the corner of Broadway and First St. (Rt. 191) in Bangor.

The group meets the third Monday of the month from 7pm to 8pm. It is free.

A professional counselor will facilitate the group. All are welcome. No sign-up is needed. Call 610-452-9348 for more info.

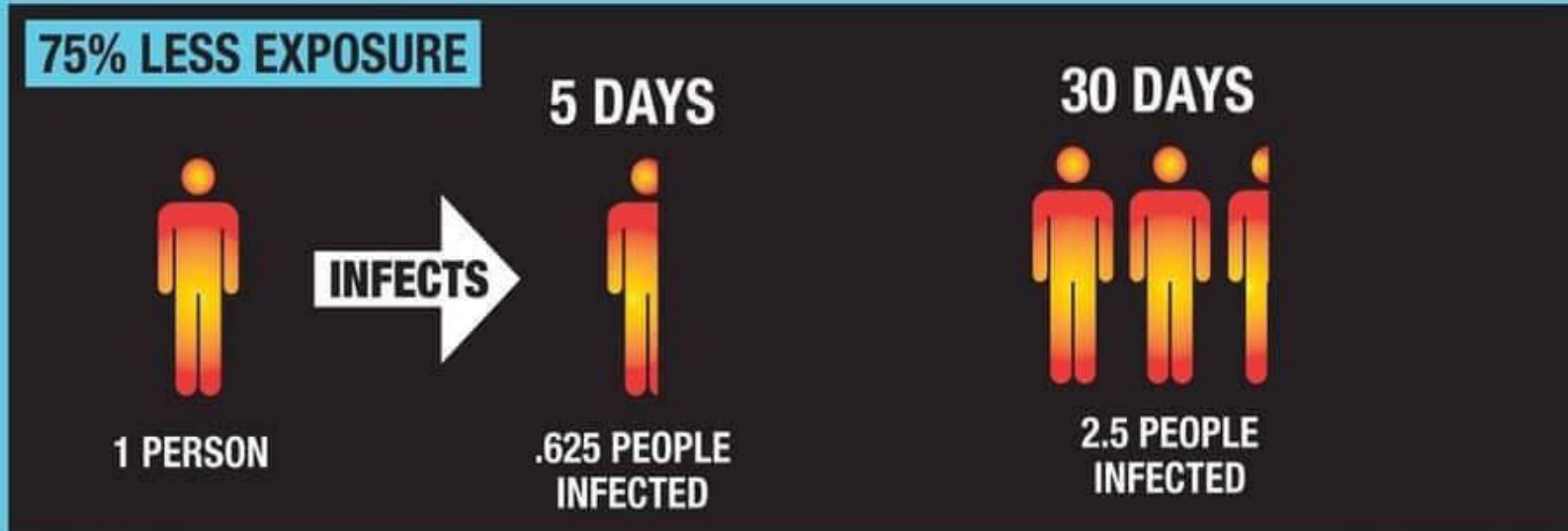
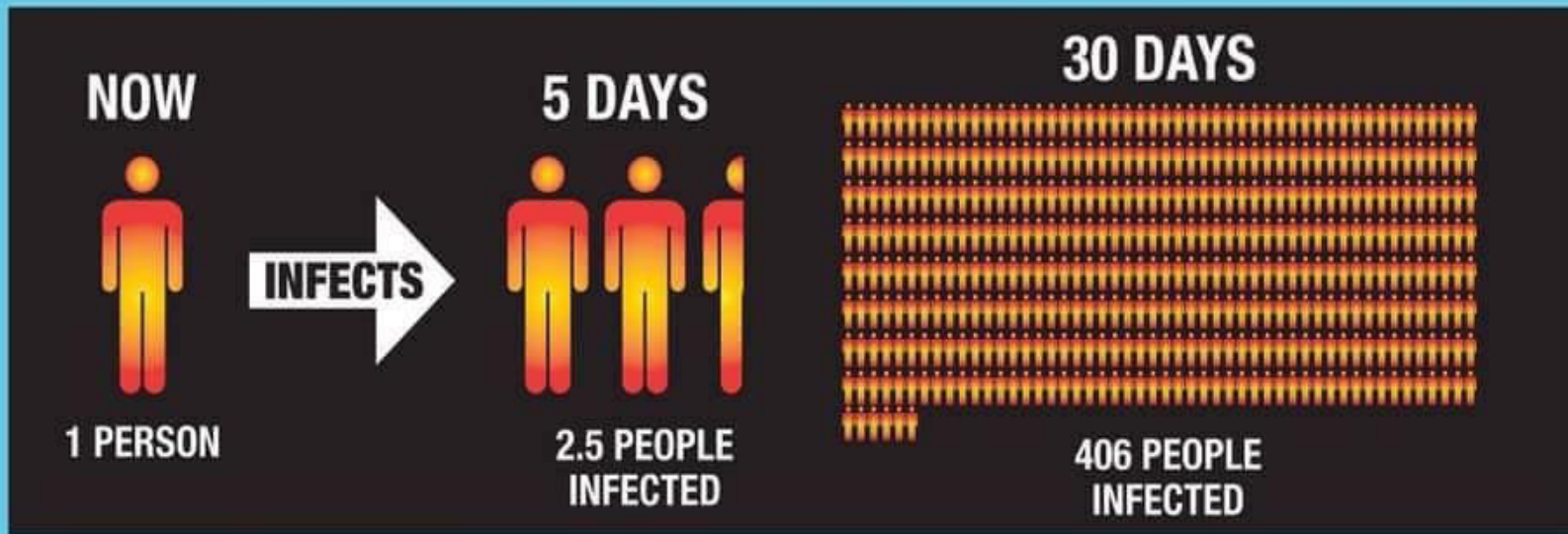
Restaurant Week

Coming this July 5-12! the Slate Belt Chamber of Commerce is asking the participating restaurants to pick a local business that will offer a discount. This will expand restaurant week to include retail stores. When you visit a restaurant during restaurant week, save your receipt and visit that participating retailer, show your receipt to receive a discount. If interested in participating in restaurant week call the office. Their display racks are getting a bit low with your business cards and flyers. Stop by today and update your information.

Struggling With Substances?

People struggling with substances can now walk in for drug and alcohol assessments at the Clean Slate Bangor, 100 South First Street St, Bangor 610-452-9348 Mondays from 10am - 12pm Many times this is the first step toward treatment and a new life.

THE POWER OF SOCIAL DISTANCING



@SignerLab

@garywarshaw

Mental Health Help During COVID-19

Crisis Text Line



**Text 'PA'
to 741741**

National Suicide Prevention Lifeline



1-800-273-8255

Preventing suicide in PA



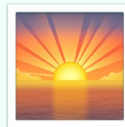
**preventsuicide
pa.org/**

Disaster Distress Helpline



800-985-5990

Get Help Now for substance use disorder



1-800-662-4357

Veterans in crisis



**veterans
crisisline.net**

PA's support helpline



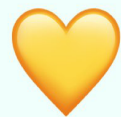
855-284-2494

Coping with COVID-19 stress



bit.ly/covid-coping

COVID-19 resources



**mhanational.
org/covid19**



GUIDANCE FOR BUSINESSES CLOSED DURING COVID-19



As businesses enter the Yellow Phase of the state's reopening plan, owners and operators of dormant buildings should flush building water systems

- 
- ✓ Develop a flushing plan
 - ✓ Flush the entire building
 - ✓ Clean faucets, shower heads, and other fixtures
 - ✓ Inspect equipment and conduct necessary maintenance
 - ✓ Consider developing an ongoing water management plan



COVID-19

REOPENING PHASES

WORK & CONGREGATE SETTINGS

SOCIAL SETTINGS

RED PHASE

- LIFE-SUSTAINING BUSINESSES ONLY
- RESTRICTIONS IN PLACE FOR PRISON + CONGREGATE CARE
- SCHOOLS CLOSED FOR IN-PERSON INSTRUCTION
- MOST CHILD CARE CLOSED

- STAY AT HOME ORDERED
- LARGE GATHERINGS PROHIBITED
- RESTAURANTS/BARS LIMITED TO CARRY-OUT + DELIVERY
- ONLY TRAVEL FOR LIFE-SUSTAINING PURPOSES

YELLOW PHASE

- TELEWORK MUST CONTINUE WHERE FEASIBLE
- BUSINESSES WITH IN-PERSON OPERATIONS MUST FOLLOW SAFETY ORDERS
- CHILD CARE OPEN COMPLYING WITH GUIDANCE
- RESTRICTIONS IN PLACE FOR PRISON + CONGREGATE CARE
- SCHOOLS CLOSED FOR IN-PERSON INSTRUCTION

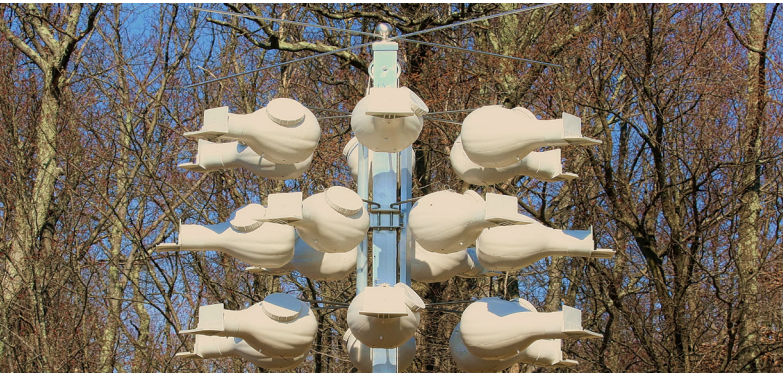
- STAY AT HOME ORDER LIFTED FOR AGGRESSIVE MITIGATION
- LARGE GATHERINGS OF MORE THAN 25 PROHIBITED
- IN-PERSON RETAIL ALLOWED CURBSIDE/DELIVERY PREFERRED
- INDOOR RECREATION, HEALTH AND WELLNESS FACILITIES (SUCH AS GYMS, SPAS, HAIR SALONS, NAIL SALONS AND OTHER ENTITIES THAT PROVIDE MASSAGE THERAPY), AND ALL ENTERTAINMENT (SUCH AS CASINOS, THEATERS) REMAIN CLOSED
- RESTAURANTS/BARS LIMITED TO CARRY-OUT + DELIVERY

GREEN PHASE

- ALL BUSINESSES MUST FOLLOW CDC AND PA DEPARTMENT OF HEALTH GUIDELINES

- AGGRESSIVE MITIGATION LIFTED
- INDIVIDUALS MUST FOLLOW CDC AND PA DEPARTMENT OF HEALTH GUIDELINES

Man-Made Purple Martin Nests at Lake Minsi



Purple Martins, according to many experts, have developed a positive relationship with humans and appear to rely on man-made nesting sites like the structures at Lake Minsi. (Photo to right)

Successfully attracting and hosting a Purple Martin colony depends on selecting quality housing, having suitable habitat, and practicing active colony management

Martin housing is placed in the most open spot available (at least 40', but preferably 60' from trees or buildings) and within 100' of human housing or activity. Proximity to humans and a wide-open location help protect the martins from predators.

Bangor PD Needs Sanitizing Products

Due to a shortage of hand sanitizer, Clorox and Lysol products, the Bangor Police Department is asking if anyone has any extra hand sanitizer, Clorox or Lysol wipes and would like to donate them, if so call (610-588-4720) or stop by the station.

SBRPD Needs Sanitizing Products

Slate Belt Regional Police Department need disinfecting wipes (Clorox type). Their officers are out performing their jobs, dealing with our neighbors and friends where help is needed; all while attempting to keep themselves and their own families safe during these unusual times. If you should have a container of antiseptic wipes that you would be willing to donate, we would be ever so grateful. Just one container, we aren't asking you to deplete your supply, just one container from a few people would tide us over until the stores are resupplied again. They are wiping down cars, duty belts, radios, pretty much everything... constantly...for your protection and ours. Call 610.759.8517

DO NOT call 9-1-1

Martin housing should raise and lower vertically on a telescoping pole, lanyard, or winch system. Housing will need to be lowered—sometimes on a daily basis—to remove House Sparrow and European Starling nests. Regular monitoring of active martin nests is essential; landlords who do not monitor their colony will not know if they are losing martins to snakes, owls, hawks, parasite infestation, etc

The purple martin is the largest swallow in North America. Despite their name, purple martins are not truly purple. Their dark blackish-blue feathers have an iridescent sheen caused by the refraction of incident light giving them a bright blue to navy blue or deep purple appearance.

They are known for their speed, agility, and characteristic mix of rapid flapping and gliding flight pattern. When approaching their nests they will dive from the sky at great speeds with their wings tucked.

Martins make their nests in cavities, either natural or artificial. Martins are insectivores and primarily feed by hawking, a strategy of catching insects in the air during flight

The martins migrate to the Amazon basin in winter

St. Luke's Care Now Open

St. Luke's Care Now – Wind Gap, 487 East Moorestown Road Wind Gap, 484-526-7850

Monday through Friday: 7:30 am – 10:30 pm

Saturday and Sunday: 8 am – 8 pm

Clothing for Qctoberfest

Since everyone is cleaning out their closets, etc. If you have pants or jeans (any size, even kids) with holes that are not repairable or even long sleeve shirts, please save them for Qctoberfest (Bangor Park). They can use them for scarecrow making. (Even if they don't have

Former COVID 19 Patients Asked to Donate Plasma

Have you or do you know someone that has recovered from COVID 19? If so you can donate your plasma to help others with COVID 19. For more information call me at 570-449-586 or visit giveapint.org.