

NEWS TODAY NOT NEXT WEEK

# Slate Belt Town Topics

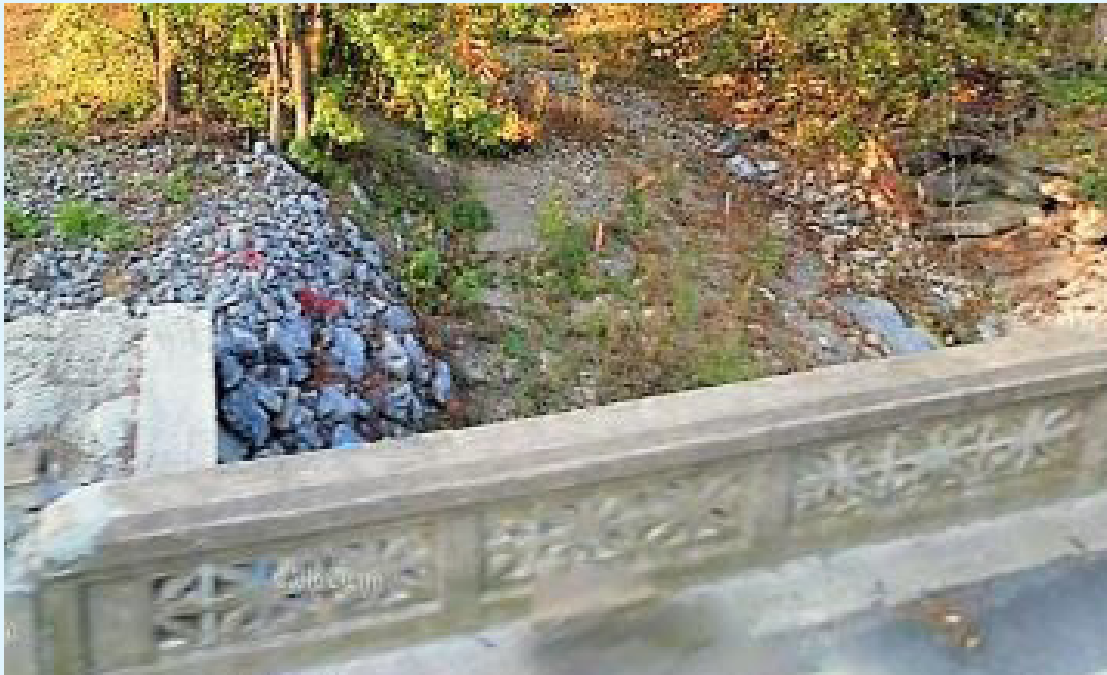
## Martins Creek Belvidere Highway Open in LMBT

The Pennsylvania Department of Transportation (PennDOT) Engineering District 5 announced today Martins Creek Belvidere Highway is open in Lower Mount Bethel Township, Northampton County


The road closed on May 9 to allow workers to replace the Martins Creek Belvidere Highway bridge over a tributary to Oughoughton Creek. The concrete slab bridge was replaced with a concrete box culvert. Grace Industries, Inc. of Bath, PA was the general contractor on the \$597,828 project.






The Martins Creek Belvidere Highway bridge was constructed in 1927. It was 11 feet long and 26 feet wide. The new culvert is 10 feet long and 31 feet wide. This section of Martins Creek Belvidere Highway has an average daily traffic volume of 2,656 vehicles.

Motorists can check conditions on major roadways by visiting [www.511PA.com](http://www.511PA.com). 511PA, which is free and available 24 hours a day, provides traffic delay warnings, weather forecasts, traffic speed information and access to more than 1,000 traffic cameras.



## Independence Weekend Outlook



 Thursday	 Friday	 Saturday	 Sunday	 Monday
<b>Upper 80s</b> Mostly sunny. Warmer with a cold front to our north.	<b>Lower 90s</b> Warmest day of the week with high pressure to our south and east. Scattered afternoon showers and thunderstorms.	<b>Mid 80s</b> Greater chance for showers and thunderstorms as a cold front moves through the region. Locally heavy rain possible.	<b>Mid 80s</b> Diminishing chances for showers and thunderstorms especially over portions of Delmarva as a cold front settles to our south.	<b>Upper 80s</b> Mostly sunny as high pressure moves overhead and the cold front remains well to our south.

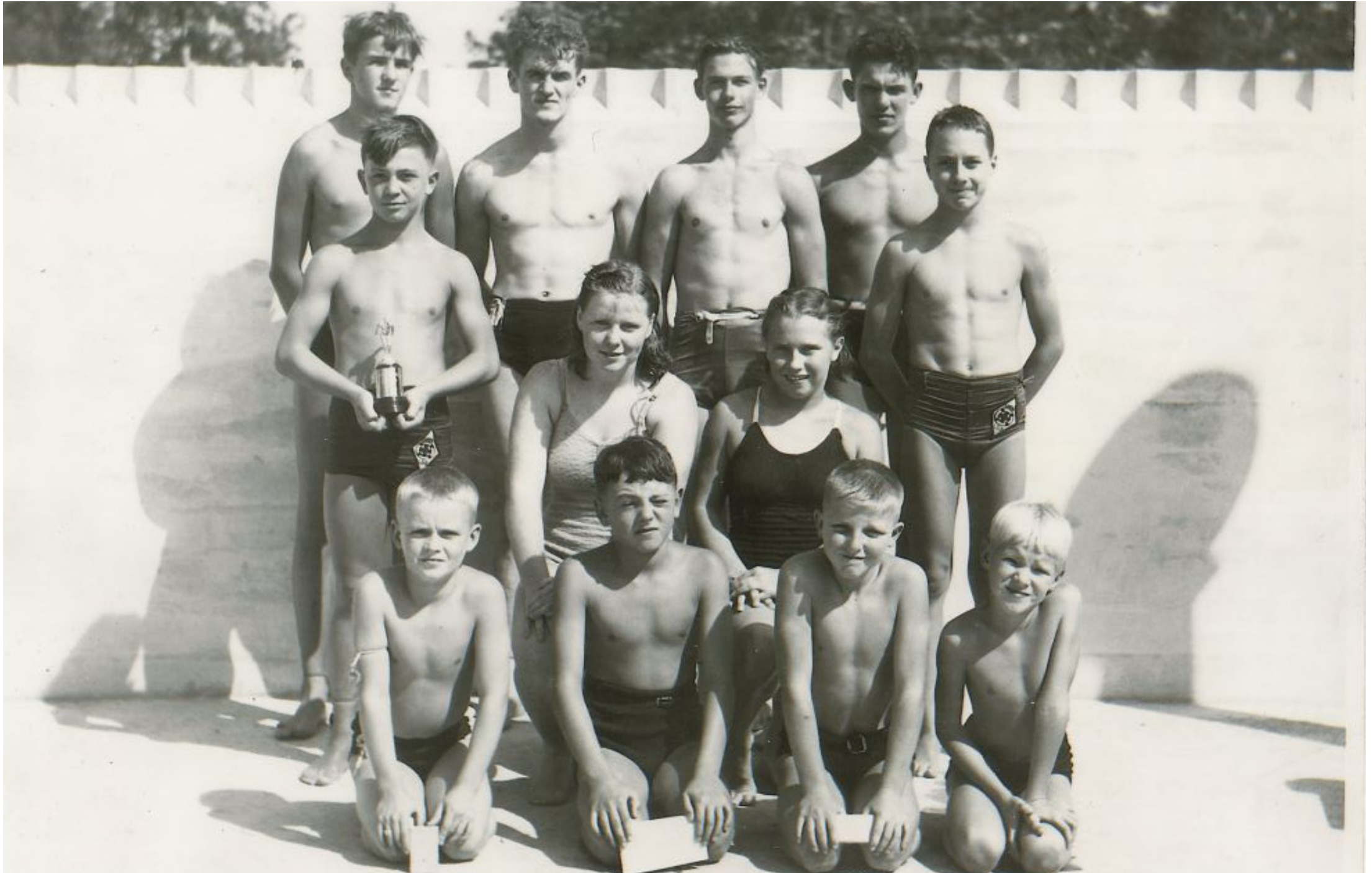
# Slate Belt Town Topics

sbttopics@rcn.com

June 30, 2022

www.sbttopics.com

## Bangor Park Swimming Pool (circa) 1940



This photograph contributed by Slate Belt resident Dr. Hayden “Denny” Pritchard was taken in 1939 or 1940 at the former one-of-a-kind Bangor swimming pool with a second floor pool and first floor locker rooms. The view is of the north side of the pool close to the diving boards. Those old enough to remember will recall that there were three diving boards, two low boards on either side of a “high dive.”

The boards were likely in use the day of this photo 80 years ago during what was likely a swimming and diving competition. The pool was filled May 4, 1939 and officially dedicated May 27, 1939.

Dedication day was marked by the appearance of the Lafayette College swim team, water clowns from the Easton YMCA, a diving demonstration by East Stroudsburg State Teachers College and swimming and diving competitions for Bangor area swimmers. Swimming and diving meets were also held the following year.

Pictured: (Front Row) L-R: Dick Pritchard, Bob Lewis, Danny Bozelli, and Denny Pritchard. (Middle Row) L-R: Joe Pritchard (standing) Kneebone, Betty Pysher, Jack Wynn (standing) (Back Row) L-R: James Pritchard, Raymond “Mouse” Williams, Charlie Marsh, Roy May.

In December 1937, the Pennsylvania Department of Health approved the pool and borough officials were going forward with preparation to construct the bathing area as the first unit of the \$150,000 project (\$3.1 million in today’s money)

Land for the pool was purchased for \$2,500 by the Bangor Recreation Association. Additional land for the athletic field track, and tennis courts was purchased for \$7,500 by Bangor borough council. Roadways to the park were made by extending Broadway and tenth street.

Wesley Binz by NTZ of Lansing Michigan supervised the construction of the pool estimated to cost \$35,000 exclusive of labor. The Works Progress Administration (WPA) authorized \$41,000 for this part of the part of the recreation center with the borough spending an additional \$17,000. The pool was ovoid (egg shaped) 80’ x 120’ and was estimated to accommodate over 2,500 bathers a day while the bathhouses would hold 800 bathers at one time.

# Slate Belt Town Topics

[sbtopics@rcn.com](mailto:sbtopics@rcn.com)

June 30, 2022

[www.sbtopics.com](http://www.sbtopics.com)

## Weona Park Summer Sounds Photo Gallery



Photos: Lynn Cistone ..... [PHOTO GALLERY](#)

### Happening Today

**Blue Mountain Library** - Open 10-12 & 6-8pm  
**Bangor Public Library** - Open 10-8  
**Slate Belt Senior Center** - Open 8-4. Blue Valley Farm Show

**Slate Belt YMCA** - 6:00am - 8:00pm  
**Bangor Park Pool** - Open 12-7

### Area Roadwork Today

**Washington / Plainfield.** Road name: PA 191. Between: Sullivan Trail and PA 512. Lane restriction 09:00 AM To 02:00 PM with flagging. Start date: 6/27 Est completion date: 7/1

**Interstate 78 Between: Exit 67 (PA 412) and Exit 75 (To PA 611)** Lane restriction 07:00 PM To 06:00 AM in both directions for concrete repair work. Expect delays and please use caution when traveling in work zones. Start date: 6/27 Est completion date: 7/1

**Moore Township Road name: Scenic Drive Between:** Mountain View Drive and Bushkill Drive Lane restriction 09:00 AM To 02:00 PM with flagging. Start date: 6/27 Est completion date: 7/1

**Upper and Lower Mt. Bethel. Road name: PA 611** Between: Bushkill Drive and Portland Borough. Lane restriction 09:00 AM To 02:00 PM with flagging. Start date: 6/29 Est completion date: 7/1

**Moore Township: Road name: Whitetail Deer Drive** Between: Valley View Drive and Grouse Drive Lane restriction 09:00 AM To 02:00 PM with flagging. Start date: 6/30. Est completion date: 7/1

## Support St. John's Cemetery

St. John's Cemetery is conducting their annual cemetery appeal for ongoing maintenance of the cemetery. Donations can be made to St. John's Cemetery, PO Box 9 c/o Carol Hummel, Bangor, PA

## Sunny 85 Today Sunny, Shwer ? 89 Friday

### National Weather Service Forecast

**Today,** Sunny, with a high near 85. Calm wind northwest around 5 mph in the morning.

**Tonight,** Mostly clear, with a low around 63. West wind around 5 mph.

**Friday,** A slight chance of showers and thunderstorms after 2pm. Sunny, with a high near 89. Southwest wind 5 to 10 mph. Chance of precipitation is 20%.

**Friday Night,** A chance of showers and thunderstorms, mainly after 8pm. Mostly cloudy, with a low around 69. Southwest wind 5 to 10 mph. Chance of precipitation is 50%. Rainfall less than a tenth of an inch, except higher amounts possible in thunderstorms.

**Saturday,** Showers and possibly a thunderstorm. High near 83. Southwest wind around 5 mph. Chance of precipitation is 80%. Rainfall between a quarter and half of an inch.

**Saturday Night,** Showers and possibly a thunderstorm before 8pm, then a chance of showers and thunderstorms, mainly between 8pm and 2am. Low around 65. Chance of precipitation is 80%. Rainfall between a tenth and a quarter inch, more possible in thunderstorm

**Air Quality: Moderate** (50-100) Bethlehem (36) Columbia N.J. (53)

**Pollen: 4.3 Low-Medium** (Top Alergen (s) Grasses, Dock, Plantain

**UV: Very High Risk** (10-5) Peak 9.0 at 1:00 pm

## Slate Belt Weather

### ICYMI

(Click Below to Read)

<a href="#">June 29</a>	<a href="#">June 23</a>
<a href="#">June 28</a>	<a href="#">June 22</a>
<a href="#">June 27</a>	<a href="#">June 21</a>
<a href="#">June 26</a>	<a href="#">June 20</a>
<a href="#">June 25</a>	<a href="#">June 19</a>
<a href="#">June 24</a>	<a href="#">June 18</a>

## Recent Photo Galleries



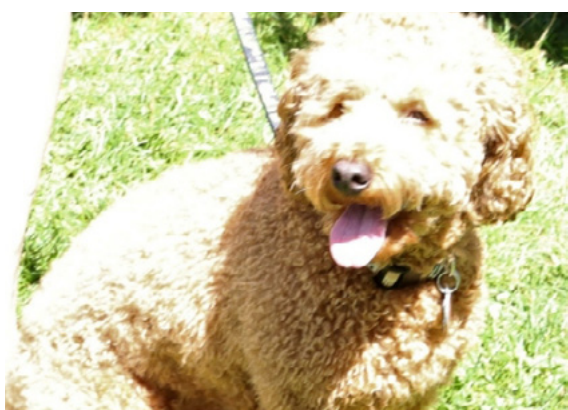
[Bangor Tennis Clinic](#)



[WW II Weekend](#)



[Pen Argyl Tennis Clinic](#)



[Wind Gap Shop n' Stroll](#)

# ...Attention Non-Profits...

## Advertise Your Event on This Page

**One Week - \$25**  
**New Paper Every Day**  
**Including Weekends**



**Reach An Average of 3,000**  
**People Everyday On...**  
Facebook (5,000 friends)  
LinkedIN ..... [sbtopics.com](http://sbtopics.com)  
Instagram .... Twitter



**Will Meet With You at a**  
**Time and Location**  
**Convenient to you**

.....Contact Us at.....

e-mail - [sbtopics@rcn.com](mailto:sbtopics@rcn.com)

Phone or Text - 570-688-3724



## PUBLISH YOUR EVENT

To publish info about your event, e-mail [sbtopics@rcn.com](mailto:sbtopics@rcn.com) Please send in text form. Do not send photos of text.

**July 1**

### Bird Banding at GCS

The Grand Central Landfill Habitat Team and Federal Bird Bander Paul Karner will band baby American Kestrels on Friday July 1, 2022 at 9:30 am at the Grand Central Environmental Education Center (891 Grand Central Road Pen Argyl). We will take a short walk into the grassland field to observe the birds and discuss the importance of the preservation of grasslands in Northampton County. The event is great for all ages!.

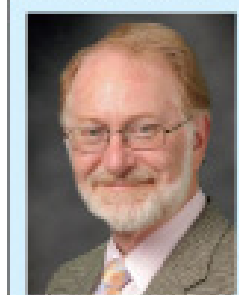
**July 2**

### Blue Valley Tractor Pull

The New Penn Jersey Tractor Pullers Association Inc. Season Opener has been rescheduled at the Blue Valley Farm Show 707 American Bangor Road, Bangor Saturday July 2nd, 2022. (Time TBA) Registration Closes 30 minutes before start.



Save when you insure your home and auto with ERIE. You can have superb insurance coverage, outstanding service, great rates and discounts too. Take advantage of ERIE's multi-policy discount and we're willing to bet your tail will be waggin'. Also ask us about ERIE's other available discounts.



**Robin Tinsley**

Sabatino Insurance Agency Inc  
17 S Robinson Ave  
Pen Argyl, PA 18072-1765  
[ROBIN@SABATINOINS.](mailto:ROBIN@SABATINOINS.)  
610-863-6033

Discounts, rates and coverages vary by state and are subject to eligibility and applicable rates and rules. ERIE® Insurance services are provided by one or more of the following insurers: Erie Insurance Exchange, Erie Insurance Company, Erie Insurance Property & Casualty Company, Flagship City Insurance Company and Erie Family Life Insurance Company (home offices: Erie, Pennsylvania) or Erie Insurance Company of New York (home office: Rochester, New York). Not all companies are licensed or operate in all states. Not all products are offered in all states. Go to [erieinsurance.com](http://erieinsurance.com) for company licensure and territory information. 8/16/15

The actual running order will be posted the day of event at registration Weight Transfer Machine by Crouse Sled Rental \$10 General Admission, Kids under 12 Free - \$20 hook fee for competitors. All Classes Pay standard NPJ Purse (like at Plainfield) - No Trophies

**July 3**

### Wind Gap Concert

Wind Gap Park Concert 6:00pm - Main St. Cruisers

**July 7**

### Weekly Weeders

Thursday, July 7, 14, 21, & 28 at 8:30am to 10:30am

Interested in learning more about gardening with native plants? Volunteer to work alongside our education staff as they mulch, pull weeds, divide plants, and amend soil in the center's native plant garden. We provide instruction, tools, and weeding mats. Registration is required at <https://events.dcnr.pa.gov/search/events?order=date&search=jacobsburg>

**July 9**

### Four B's Walk

Saturday, July 9 at 10:00am to 11:30am

Need a break from the fast pace in a natural space? Borrow our nets, binoculars and ID books and join us for a fruitful walk as we find butterflies, bugs, birds, and blooms. Registration Required at <https://events.dcnr.pa.gov/search/events?order=date&search=jacobsburg>

### Honeysuckle Hacking - Volunteer Event

Saturday, July 9 at 1:00pm to 3:00pm

You may be surprised to find out that most of the shrubbery around the park are actually invasive honeysuckle species mixed with other woody-stemmed invasives. We will have a quick lesson on identification, ecological impacts, and management and then get geared up to lop, chop, and stop the spread. Tools and safety equipment will be provided. Registration is required at <https://events.dcnr.pa.gov/search/events?order=date&search=jacobsburg>

**July 10**

### Weona Park Concert

Large Flowerheads 6-8pm.

**July 14**

### Weekly Weeders

Thursday, 14, 21, & 28 at 8:30am to 10:30am

Interested in learning more about gardening with native plants? Volunteer to work alongside our education staff as they mulch, pull weeds, divide plants, and amend soil in the center's native plant garden. We provide instruction, tools, and weeding mats. Registration is required at <https://events.dcnr.pa.gov/search/events?order=date&search=jacobsburg>

### History of Pen Argyl

The Slate Belt Heritage Center will hold its monthly historic program on Thursday, July 14, @ 7:00 PM. Walter Cole, former history teacher and town historian for Pen Argyl will do a presentation on his upcoming book, The History of Pen Argyl From the 1840's to the Present. The program will include showing the many primary and secondary sources he used to conduct his research. Mr. Cole will also reveal the many topics that will be included in the book which will also include human interest stories and personal interviews. In addition to preserving historical information for future generations, the other purpose in publishing the book is that proceeds raised will go towards funding the building of the new Pen Argyl swimming pool. Mr. Cole asks that anyone who has personal memories, of Pen Argyl or local lore, to contact him at 610-863-6472. The program is free and open to the public. The Heritage Center is located at 30 North 1st Street, Bangor, PA. For additional information please contact: Karen Brewer at 484-894-5661

**July 17**

### Moravian Historical Society

The Moravian Historical Society is pleased to announce their participation in Passport to History Month—a celebration of the sites, stories, and community that bring Lehigh Valley history to life. The event gives an opportunity for visitors, regardless of family size or income, to explore local history through a variety of museum tours, interactive exhibits, children's activities,

**Hometown**  
**BRAND CENTER**

APPLIANCE SALES, SERVICE & SUPPORT



**OVER 25 BRANDS**

CLICK HERE FOR STORE INFO - [www.hometownsaves.com](http://www.hometownsaves.com)

## KLINE'S AUTO REPAIR

460 South First St. Bangor, Pa ~ 610-588-4140

[www.klinesautorepair.com](http://www.klinesautorepair.com)



### AUTO REPAIRS

MAJOR or MINOR

Bruce J. Kline

## DALE ALBERT'S GARAGE Inc.



- Oil Change •
- Tires - Tune-Ups •
- Wheel Alignment •
- Major or Minor Repair •
- PA Emissions and Inspection •

A to Z Performance Engines

19 Blue Valley Drive, Bangor  
610-588-1902 Fax 588-1887  
[stodd86@frontier.com](mailto:stodd86@frontier.com)

## AT VCA, WE CARE

### SPECIAL OFFERS

Senior Citizen Tuesday and Friday  
(10% OFF non-discounted services)

VCA Care Club® Wellness Plans

### VCA AVH ANIMAL HOSPITAL

1027 Blue Valley Dr. Pen Argyl, PA 18072

610-863-7111



Check Us Out at  
[vcaavh.com](http://vcaavh.com)



#### BUSINESS HOURS

Mon 8:00 AM - 7:00 PM • Tue - Wed 8:00 AM - 6:00 PM

Thurs 8:00 AM - 7:00 PM

Fri 8:00 AM - 5:00 PM • Sat 8:00 AM - 2:00 PM

## Calendar 2

and more.

On Saturday July 16 from 10 a.m. - 4 p.m. and Sunday July 17 from 12 p.m. - 4 p.m., the Moravian Historical Society will offer free admission, guided museum tours, kids activities, an antique book sale, and programs for explorers of all ages.

Visitors can learn about the significant contributions Moravians made to music, art, education and culture in early America on a guided tour of the 1740-1743 Whitefield House Museum. Explore archival documents and historic maps detailing the perspectives of surveyors, European settlers and Indigenous people in our special exhibit "Charting the Unknown: Early Moravian Maps."

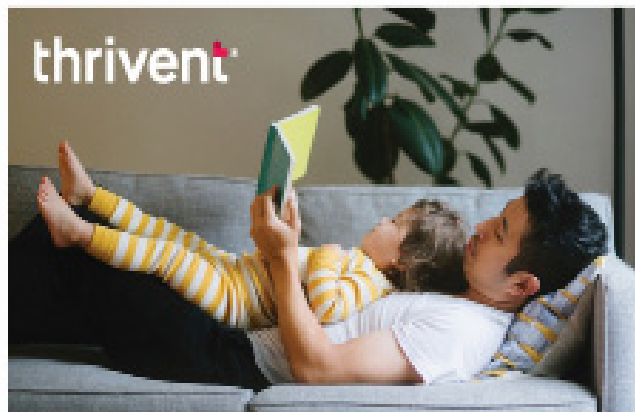
Children can try their hand at colonial chores and other history-themed activities. Adults will enjoy browsing a large collection of antique books offered for sale.

July 20

### Hike for Health

Wednesday, July 20 at 5:30pm to 7:00pm

Get moving after work with a brisk hike at Jacobsburg! These guided monthly hikes are 2 to



### A life worth living

Is a life worth insuring.

Live your life to the fullest knowing your family can continue the one you envisioned for them—even when you're gone. Purchase insurance today to protect their tomorrow.

Schedule time to discuss your needs today.

Jewel Williamson-Burns, CLU®, FIC  
Financial Associate  
18 Mauch Chunk St, Nazareth, PA 18064  
610-746-0344  
[jewel.williamson-burns@thrivent.com](mailto:jewel.williamson-burns@thrivent.com)  
[connect.thrivent.com/jewel-williamson-burns](http://connect.thrivent.com/jewel-williamson-burns)  
CA Insurance 0M53186

This is a solicitation for insurance. A licensed insurance agent/producer may contact you. This contract has exclusions, limitations, and terms under which the benefits may be reduced, or the contract may be discontinued. For costs and complete details of coverage, contact your licensed insurance agent/producer. Thrivent is the marketing name for Thrivent Financial for Lutherans. Insurance products issued by Thrivent. Not available in all states. Licensed agent/producer of Thrivent. [Thrivent.com/disclosures](http://Thrivent.com/disclosures). 206BBL RB-20

2.5 miles over uneven terrain. Dogs are welcome to hike on a leash. Meet at the Visitor Center flagpole at 400 Belfast Road. Registration is not required. Join the email reminder list by contacting us at 610-746-2801 or [jacobsburgsp@pa.gov](mailto:jacobsburgsp@pa.gov).

July 17

### Wind Gap Concert

Wind Gap Park Concert 6:00pm - New Individuals

July 21

### Weekly Weeders

Thursday, 21, & 28 at 8:30am to 10:30am

Interested in learning more about gardening with native plants? Volunteer to work alongside our education staff as they mulch, pull weeds, divide plants, and amend soil in the center's native plant garden. We provide instruction, tools, and weeding mats. Registration is required at <https://events.dcnr.pa.gov/search/events?order=date&search=jacobsburg>

July 23

### Butterflies of Jacobsburg

Saturday, July 23 at 10:00am to 12:00pm

Join local butterfly enthusiast Bill Grant for this walk through the fields of Jacobsburg in search of these beautiful insects. He'll show you how to quickly identify local species and the best places to look for them. Participants should wear comfortable shoes. A hat, bottled water sunscreen, binoculars, and camera are recommended. This program is best for families with children ages 8 and up. Registration is required.

### Creek Critters

Saturday, July 23 at 2:00pm to 3:00pm

Join us to learn about the fascinating creatures living in Bushkill Creek. Equipment to study these animals will be provided. Wear close-toed shoes

## Malachowski & Son, LLC

Mt. Bethel, PA

Providing Quality Service for 30 Years...

- Plumbing • Well Pumps
- Air Conditioning Service & Install
- Certified Water Treatment Installers
- Bathroom Remodel • New Home Construction
- Furnace Cleanings • Heating Service & Repairs



570-897-5443

[www.malachowskiandson.com](http://www.malachowskiandson.com)



1043 S Broadway, Wind Gap, PA 18091-0248

610 - 863 - 6100



CHEVROLET

### Calendar 3

that can get wet and expect to be in the water up to your knees. This program is best for families with children ages 5 and up. Registration is required

**July 24**

## Weona Park Concert

Philadelphia Funk Authority 6-8pm.

**July 23-24**

## SBHC Passport to History Weekend

The Slate Belt Heritage Center will host "Passport to History Weekend on July 23-24. The Museum will be open Saturday from 10-4 and Sunday from 12-4. The Center is featuring "We Look Higher: the African American Experience in the Slate Belt" as this year's special exhibit and "All of Us" about the waves of people who moved to the Slate Belt from the 18th Century Lenape to the 21st Century Bulgarians. Newly designed galleries tell stories about the creation of Flicksville, the work in the Textile Industry and the service of Fire Fighting in the Slate Belt. Mike Piersa and team plan to periodically run the Flory Quarry Hoist in the adjacent Bethel Park during one of the days. Flory Hoists were manufactured in Bangor and powered the cable ways that lowered men into quarries and raised massive slabs of slate from quarry beds. Perry Morris will demonstrate the craft of wooden ornament making throughout the weekend. Guides will be available to give tours or you can wander through the museum on your own. The Slate Belt Heritage Center is located at 30 North 1st Street in the heart of Bangor's Historic District. For additional information contact: Karen Brewer @ 484-894-5661.

Perry Morris will also be doing a "Story Time", in addition to ornament making, for the children.

The 122-year-old Bangor Quarry Hoist, in adjacent Bethel Park, will operate, weather permitting on that Saturday from noon to 3 PM. Flory Hoists were manufactured in Bangor and powered the cableways that lowered men into quarries and raised massive slabs of slate from quarry beds. The Hoist will run courtesy of compressed air provided by Todd Kluska of Serene Scenes Landscaping.

**July 28**

## Weekly Weeders

Thursday, July 28 at 8:30am to 10:30am

Interested in learning more about gardening with native plants? Volunteer to work alongside our education staff as they mulch, pull weeds, divide plants, and amend soil in the center's native plant garden. We provide instruction, tools, and weeding mats. Registration is required at <https://events.dcnr.pa.gov/search/events?order=date&search=jacobsburg>

**July 31**

## Wind Gap Concert

Wind Gap Park Concert 6:00pm -Steel Creek

**Aug 5,6,7**

## Roseto Yard Sales

The annual Roseto Borough yard sale will be held the first weekend of August. day, Saturday and Sunday August 5th, 6th and 7th. The Borough waives the normal fees for this weekend, so setup and sell your treasures.

**August 7**

## Aonghus Oakley Ames Miller 4x4 Truck Show

The first Annual Aonghus Oakley Ames Miller 4x4 Truck Show to fund Blue Collar Scholarship in his memory is planned for the Blue Valley Farm Show 1:00 p.m. Sunday August 7. Tickets · \$10 - \$45 [www.eventbrite.com/e/310620603587](http://www.eventbrite.com/e/310620603587)

Fun! Trucks! Prizes! Food!

You can help pay it forward through the Blue Collar Scholarship!!! Check out [www.aoamfoundation.org/bluecollarscholarship](http://www.aoamfoundation.org/bluecollarscholarship) for information!

Private Rooms:  
\$2330, \$2455 and  
\$2540 per month

325 N. BROADWAY  
WIND GAP, PA

Visit our website for rates and  
services at: <http://walden-3.com>

*Just the  
right  
amount  
of care  
at the  
right  
price*

1-800-724-4795 • 610-863-7059

6-8pm.

**August 14**

## Wind Gap Concert

Wind Gap Park Concert 6:00pm - Inch and the Echoes

**August 21**

## Weona Park Concert

Desire 6-8pm.

**August 27**

## Delaware Riverfest - Vendors, Food & More

Enjoy the day along the Delaware River shopping with vendors, delicious food, drinks, music, and more!

August 27, 2022 from 10AM to 3PM , 422 Delaware Avenue Portland, PA 18351

For vendor opportunities email [blueflameevents@yahoo.com](mailto:blueflameevents@yahoo.com)

Registration cost is \$30 Per 10 x 10 space

## RICHARD M. SHAPLIN FINANCIAL SERVICES

*Richard  
Shaplin Sr.*



*Richard  
Shaplin Jr.*

610-559-5197

308 Spring Garden Street • Easton, PA 18042

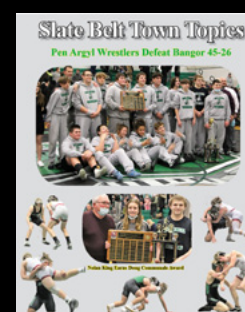
*Securities offered through Royal Alliance  
Associates, Inc., Member FINRA, SIPC.*

# Slate Belt Town Topics

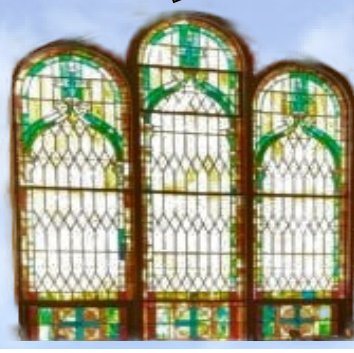
**Read the Town Topics With Fresh News  
Everyday at These Sites.....**



**Slate Belt Town Topics @ Facebook  
Slate Belt Town Topics @ Instagram  
Slate Belt Town Topics @ LinkedIn  
Slate Belt Town Topics @ Twitter  
[SlateBeltTownTopics.com](http://SlateBeltTownTopics.com)  
Larry Cory @Facebook**



# Slate Belt Church Information



## Christ Presbyterian Church of The Slate Belt

332 Kennedy Drive, Bangor

[www.christpcsb.org](http://www.christpcsb.org)

More info 610-588-4864.

E-mail: [info@christpcsb.org](mailto:info@christpcsb.org).

**Sunday Worship, 10:00 a.m.** (Until 9/11)

in-person/Zoom/Facebook Live.

For more info: 610-588-4864.

## Flicksville UCC

1337 Lower South Main St., Bangor

Pastor Ken Hess 610-588-4648

[www.flicksvilleucc.com](http://www.flicksvilleucc.com)

**Summer Worship at 10 AM**  
following social distancing guidelines

## Trinity Lutheran Church

404 Broadway Bangor (610-588-2023)

[telcbangor@frontier.com](mailto:telcbangor@frontier.com)

Website: [www.tlcbangor.com](http://www.tlcbangor.com)

Sunday worship 10:30 a.m.

**Holy Communion:** First and Third Sundays

**Refreshments after. Masks optional.**

## East Bangor UMC

136 W. Central Ave. (Rt.512) East Bangor

**Sat. July 2 - 8pm AA Meeting**

**Sun July 3 -9:30 a.m. Worship Service**

(Live & on Zoom) 10:45 Fellowship Hour

(For Zoom, go to [ebumc.org](http://ebumc.org) to sign in)

## First United Methodist Church of Bangor

Pastor Elisandra Garcia - 610-588-4673

55 North Third Street, Bangor PA

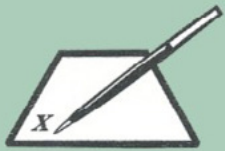
11:00am service (Communion First Sunday)

## Mt. Bethel Abstract

Complete Title Insurance Services

**Susan McKean**

President



3013 N. Delaware Drive

Mt. Bethel, PA 18343

Phone: 570-897-9047

Fax: 570-897-9048

Toll Free: 888-325-2433

[www.mountbethelabstract.com](http://www.mountbethelabstract.com)



SERVING THE  
SLATE BELT &  
LEHIGH VALLEY

**JOHN T. SCHIMMEL**

PUBLIC ACCOUNTANT

1400 NORTHAMPTON ST. EASTON, PA 18042

Phone: (610) 253-4000 q Fax: (610) 258-FAX4

E-Mail: [john\\_schimmel@yahoo.com](mailto:john_schimmel@yahoo.com)

**Duke's**  
Sporting Goods

Authorized  
 Dealer

Owner  
Duke Bloodworth  
22 Broadway  
Bangor, PA 18072

## Team Sports Equipment And Uniforms

- Work & Occupational Wear
- Screen Printing
- Embroidery Services
- Digital Color Printing

Banners, Decals &  
WALL BANGERZ,  
Wall Posters  
(FATHEAD TYPE)

COACHES & PARENTS SAVE TIME & \$\$\$!  
VOLUME DISCOUNTS ON ACCESSORIES & EQUIP

"GOAL POSTS TO SOCKS AND EVERYTHING IN BETWEEN"



Phone 610-588-2958 Fax 610-588-8461

E-Mail: [dukessports@fastnet](mailto:dukessports@fastnet)

## Christ Evangelical Lutheran Church

703 South Delaware Drive Mt. Bethel,  
18343

<http://www.celcpa.org/>

Email: [celcpaorg@yahoo.com](mailto:celcpaorg@yahoo.com)

610-588-7056

**Worship:** Sundays 9:00 a.m.

**Holy Communion:** First and Third Sunday

**Toddler Sunday School:** Sept-May 10:15

## Richmond United Methodist Church

Rev. Peter Jamieson, Pastor

<http://richmondumc.com/>

8538 Delaware Dr, Bangor, PA 18013

610.588.7317 | [richmondumc@epix.net](mailto:richmondumc@epix.net)

**Sunday Worship - Weekly at 10:00 a.m.**

## Grace Lutheran Church

5907 Sullivan Trail, Nazareth Pa 18064

[www.gracebelfastpa.org](http://www.gracebelfastpa.org) 610-759-9080

Email: [gracebelfast@rcn.com](mailto:gracebelfast@rcn.com)

**July 3- 9:00 a.m. -4th Sunday after**

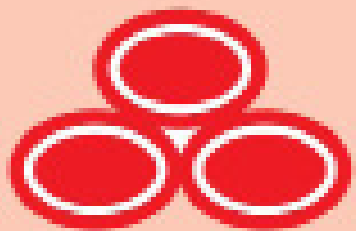
Pentecost, Holy Communion



**Church Worship Times And  
Schedules Are Public Service  
Announcements Published  
Free of Charge by The  
Slate Belt Town Topics**

E-Mail Information to

[sbtopics@rcn.com](mailto:sbtopics@rcn.com)



**State Farm**

**Debbie Pettinari Agency**  
106 S. Broadway, Wind Gap, PA  
**610-881-4433**

[www.debbieinsurespa.com](http://www.debbieinsurespa.com)

[debbie.pettinari.wz73@statefarm.com](mailto:debbie.pettinari.wz73@statefarm.com)



# Deadline Extended for 2021 Property Tax/Rent Rebate Program

The deadline for senior citizens and Pennsylvanians with disabilities to apply for rebates on rent and property taxes paid in 2021 has been extended to Dec. 31.

The Property Tax/Rent Rebate Program benefits eligible Pennsylvanians age 65 and older; widows and widowers age 50 and older; and people with disabilities age 18 and older. The income limit is \$35,000 annually for homeowners and \$15,000 annually for renters, and half of Social Security income is excluded.

The maximum standard rebate for homeowners is \$650, but supplemental rebates for certain qualifying homeowners can boost rebates to \$975. The Department of Revenue automatically calculates supplemental rebates for qualifying homeowners.

Claimants are encouraged to file their rebate applications online by visiting [mypath.pa.gov](http://mypath.pa.gov). No account is required. Applicants who still wish to file a paper application form may obtain Property Tax/Rent Rebate claim forms (PA-1000) and related information on the Department of Revenue's website or by calling 1-888-222-9190.

Rebates will be distributed beginning July 1, as required by law. The easiest way to check the status of your rebate after July 1 is to use the Where's My Rebate? tool. To check on the status of your claim, you will need your Social Security number, claim year and date of birth

## #BeatTheHeat tips



- drink plenty of water
- stay cool indoors
- use sunscreen of SPF 15 or higher
- limit outdoor activity
- avoid alcohol & caffeine
- wear light-colored, loose clothing
- check on older family & friends
- never leave kids, older adults or pets in unattended vehicles



## Maternal Mental Health Hotline

CALL OR TEXT  
1-833-9-HELP4MOMS  
(1-833-943-5746)

HHS.gov

### Heat Exhaustion

- Dizziness
- Nausea
- Weakness



### Heat Stroke

- Confusion
- Throbbing headache
- Unconsciousness



Drink water, move to cooler, air-conditioned, or shaded space

CALL 911, loosen or dampen clothing, use cool compress on forehead and neck

CS 330323-0

## 10 Early Signs and Symptoms of Alzheimer's

1. Memory loss that disrupts daily life
2. Challenges in planning or solving problems
3. Difficulty completing familiar tasks
4. Confusion with time or place
5. Trouble understanding visual images and spatial relationships
6. New problems with words in speaking or writing
7. Misplacing things and losing the ability to retrace steps
8. Decreased or poor judgment
9. Withdrawal from work or social activities
10. Changes in mood and personality



content credit: Alzheimer's Association

## PREVENT MOSQUITO-SPREAD DISEASE: AVOID MOSQUITO BITES



AVOID BITES AT  
DAWN & DUSK



USE FDA-REGISTERED  
INSECT REPELLENT



WEAR LONG SLEEVES  
& LONG PANTS



REMOVE STANDING  
WATER AROUND HOME

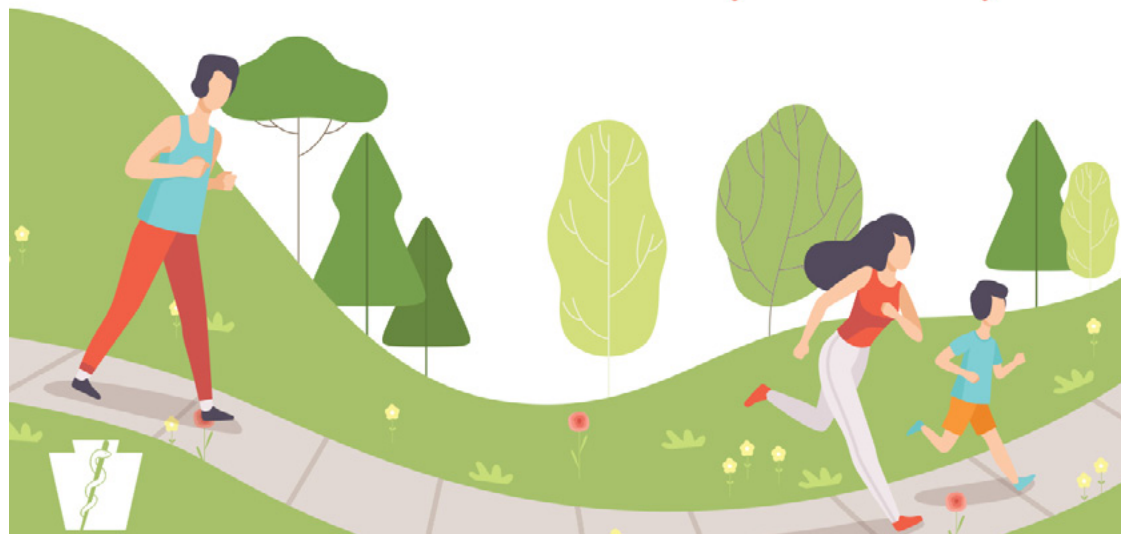




Tumble dry clothes  
on high heat for 10 minutes to kill ticks  
on dry clothing.



*Make exercise a family activity!*



## FOOD SAFETY TIPS

- **WASH** your hands with soap and water before preparing food.
- **SEPARATE** raw meats from other foods.
- **CLEAN** fruits and vegetables to remove dirt.
- **CHECK** internal temperature with a food thermometer.
- **REFRIGERATE** leftover foods promptly.



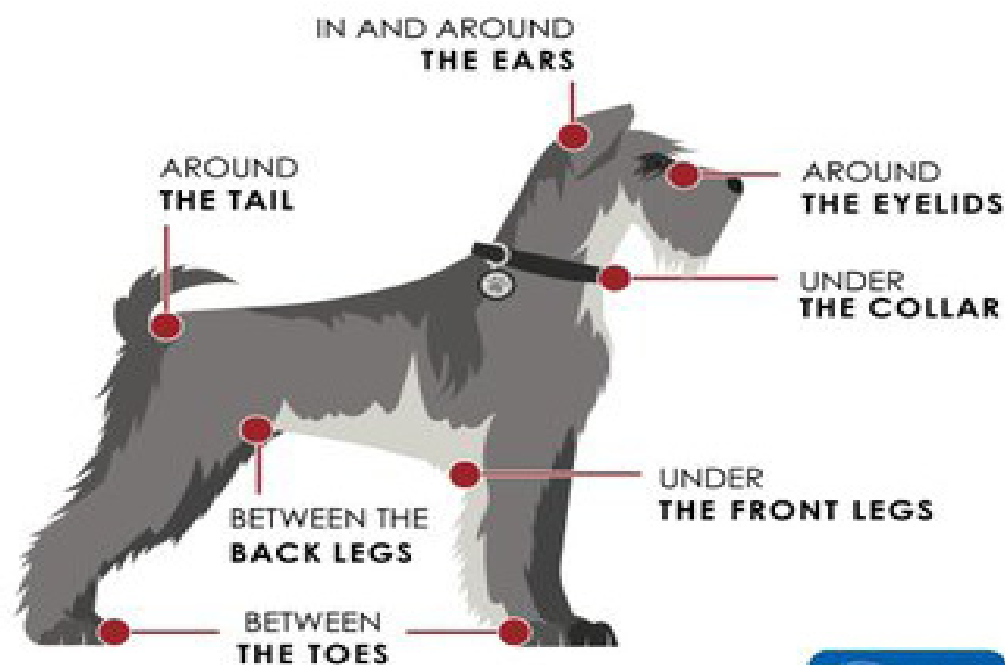
Spending **2 hours a week in nature** is associated with good health and wellbeing!

Aim for 60 minutes  
of physical activity  
**EVERY DAY!**

**NEVER LEAVE CHILDREN,  
OLDER ADULTS OR PETS  
IN A PARKED VEHICLE**



## WHERE TO CHECK YOUR PET FOR TICKS



**DRINK WATER**  
before you're  
thirsty to avoid  
heat-related illness!



# DID YOU KNOW

you can lose some of your hearing after a few minutes around these noises?



Centers for Disease Control and Prevention  
National Center for Environmental Health



Ambulance Sirens  
110-129 dB



Lawn Mowers  
80-100 dB

Fireworks  
140-160 dB



Always protect your hearing. Wear hearing protection such as earplugs or earmuffs.

## Ways to Help NATIVE BEES



- Plant native trees. Trees provide a large nectar source from their blossoms and habitat for some bees.
- Plant native plants that bloom during the spring, summer, and fall to provide a continuous food source.
- Avoid using herbicides, pesticides, and insecticides. Find organic ways to garden and remove pests.
- Provide water and habitat such as bare soil in your garden for ground-nesting bees, leave plant stems standing in winter, dead trees or fallen logs, or bee nesting houses.
- Participate in citizen science opportunities to help count bees like the Bumble Bee Watch, Great Sunflower Project, and more.
- Spread the word! Let others know how they can help.



## Tips for planting a POLLINATOR GARDEN

- Choose native plants which provide nutritional value for pollinators and require less maintenance
- Choose native plants that bloom at different times (early spring – late fall), providing food all season
- Choose plants with flowers of different sizes, shapes, and colors for the diversity of pollinators
- Plant at least 3 or more of one kind of plant together to provide larger drifts of color to attract pollinators
- Form a weed barrier by planting natives closer together instead of using mulch or landscape fabric
- Save garden clean up until spring! Pollinators overwinter in different life stages



# Mountain Laurel

## Pennsylvania State Flower Facts



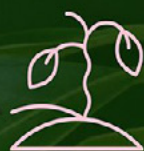
Chosen as state flower in 1933 by Governor Gifford Pinchot



Shrub that grows 4 to 10 feet high and blooms late May through June



Not an easy to grow landscaping plant, has particular soil needs



All parts of shrub are toxic to people and animals

Host plant for the Laurel Sphinx Moth



Attracts butterflies, hummingbirds, and other pollinators



Considered one of the most beautiful native flowering shrubs



Provides shelter for birds and small mammals in winter



## Ways to Help Eastern MONARCHS



- Plant native nectar plants that bloom in the spring, summer, and fall in a sunny area.
- Plant the caterpillar host plant milkweed (butterfly weed *Asclepias tuberosa*, common milkweed *Asclepias syriaca*, swamp milkweed *Asclepias incarnata*).
- Avoid using herbicides and pesticides. Find organic ways to garden.
- Enhance monarch habitat by providing water and a place to shelter with dense patches of wildflowers and shrubs.
- Participate in citizen science opportunities where you can help track monarch sightings in spring and fall.
- Spread the word! Let others know how they can help.



# Slate Belt Town Topics



# Fall Sports Schedules 2022 (League only)

## Bangor Field Hockey (0-0)

8/29	Wilson @ Bangor	4:00pm
8/31	Palisades @ Bangor	4:00pm
9/3	Bangor @ Saucon Valley	10:00am
9/7	Moravian @ Bangor	4:00pm
9/9	Bangor @ N. Lehigh	3:45pm
9/12	Palmerton @ Bangor	4:00pm
9/14	Bangor @ Pen Argyl	4:00pm
9/20	Bangor @ Wilson	4:00pm
9/22	Salisbury @ Bangor	4:00pm
9/23	Bangor @ S. Lehigh	4:00pm
9/28	Bangor @ Moravian	4:00pm
10/1	Bangor @ Catasauqua	2:00pm
10/4	Northwestern @ Bangor	4:00pm
10/6	Pen Argyl @ Bangor	4:00pm

## Pen Argyl Field Hockey (0-0)

8/29	Moravian @ Pen Argyl	4:00pm
8/31	Pen Argyl @ Palmerton	4:00pm
9/3	Pen Argyl @ Palisades	10:00am
9/7	Pen Argyl @ Wilson	4:00pm
9/10	Saucon Valley @ Pen Argyl	10:00am
9/12	N. Lehigh @ Pen Argyl	4:00pm
9/14	Bangor @ Pen Argyl	4:00pm
9/20	Pen Argyl @ Moravian	4:00pm
9/22	Pen Argyl @ Northwestern	6:15pm
9/24	Pen Argyl @ Salisbury	1:30pm
9/28	Wilson @ Pen Argyl	4:00pm
10/1	S..Lehigh @ Pen Argyl	2:00pm
10/4	Catasauqua @ Pen Argyl	4:00pm
10/6	Pen Argyl @ Bangor	4:00pm

## Pen Argyl Girls Soccer (0-0)

8/30	Pen Argyl @ Wilson	4:00pm
9/1	Northwestern @ Pen Argyl	4:00pm
9/6	Pen Argyl @ Catasauqua	4:00pm
9/8	NDGP @ Pen Argyl	4:00pm
9/15	Pen Argyl @ N.Lehigh	4:00pm
9/17	Palisades @ Pen Argyl	10:00am
9/19	Pen Argyl @ Salisbury	7:00pm
9/21	Moravian @ Pen Argyl	4:00pm
9/27	Pen Argyl @ S. Lehigh	4:00pm
9/29	Saucon Valley @ Pen Argyl	4:00pm
10/3	Pen Argyl @ Palmerton	4:00pm
10/5	Bangor @ Pen Argyl	4:00pm

## Bangor Golf (0-0)

8/11	Bangor @ Moravian	2:45pm
8/15	Northwestern @ Bangor	2:45pm
8/16	Saucon Valley @ Bangor	2:45pm
8/18	Bangor @ Pen Argyl	2:45pm
8/22	Palmerton @ Bangor	2:45pm
8/23	Salisbury @ Bangor	10:00am
8/25	Bangor @ NDGP	2:45pm
8/29	S. Lehigh @ Bangor	2:45pm
8/30	Bangor @ Palmerton	2:45pm
9/1	Moravian @ Bangor	2:45pm
9/6	Bangor @ Northwestern	2:45pm
9/8	Bangor @ Wilson	2:45pm
9/12	Pen Argyl @ Bangor	2:45pm

## Bangor Football (0-0)

8/26	Palisades @ Bangor	7:00pm
9/2	Jim Thorpe @ Bangor	7:00pm
9/9	Bangor @ S. Lehigh	7:00pm
9/16	Bangor @ Saucon Valley	7:00pm
9/23	Wilson @ Bangor	7:00pm
9/30	Bangor @ Pottsville	7:00pm
10/7	Lehighton @ Bangor	7:00pm
10/14	Bangor @ Northwestern	7:00pm
10/21	Blue Mountain @ Bangor	7:00pm
10/28	Bangor @ Pen Argyl	1:30pm

## Pen Argyl Football (0-0)

8/27	Pen Argyl @ Wilson	2:30pm
9/2	Pen Argyl @ Mahanoy	7:00pm
9/9	N. Lehigh @ Pen Argyl	7:00pm
9/16	Pen Argyl @ Northwestern	7:00pm
9/23	Catasauqua @ Pen Argyl	7:00pm
9/30	Minersville @ Pen Argyl	7:00pm
10/7	Pen Argyl @ Palisades	7:00pm
10/14	Pen Argyl @ Schuylkill Haven	7:00pm
10/21	Pen Argyl @ Panther Valley	7:00pm
10/28	Bangor @ Pen Argyl	1:30pm

## Bangor Boys Soccer (0-0)

8/30	Bangor @ N. Lehigh	3:45pm
9/1	Palisades @ Bangor	4:00pm
9/6	Bangor @ Salisbury	4:00pm
9/8	Moravian @ Bangor	4:00pm
9/13	Bangor @ S.Lehigh	4:00pm
9/15	Saucon Valley @ Bangor	4:00pm
9/17	Bangor @ Palmerton	10:00am
9/21	Wilson @ Bangor	4:00pm
9/27	Bangor @ Northwestern	6:30pm
9/29	Catasauqua @ Bangor	4:00pm
10/3	Bangor @ NDGP.	4:00pm
10/5	Pen Argyl @ Bangor	4:00pm

## Pen Argyl Boys Soccer (0-0)

8/30	Wilson @ Pen Argyl	4:00pm
9/1	Pen Argyl @ Northwestern	6:30pm
9/6	Catasauqua @ Pen Argyl	4:00pm
9/8	Pen Argyl @ NDGP.	4:00pm
9/15	N. Lehigh @ Pen Argyl	4:00pm
9/17	Pen Argyl @ Palisades	10:00am
9/19	Salisbury @ Pen Argyl	4:00pm
9/21	Pen Argyl @ Moravian	4:00pm
9/27	S. Lehigh @ Pen Argyl	4:00pm
9/29	Pen Argyl @ Saucon Valley	4:00pm
10/3	Palmerton @ Pen Argyl	4:00pm
10/5	Pen Argyl @ Bangor	4:00pm

## Pen Argyl Golf (0-0)

8/11	Pen Argyl @ Palmerton	2:45pm
8/15	Moravian @ Pen Argyl	2:45pm
8/16	Pen Argyl @ Northwestern	10:00am
8/18	Bangor @ Pen Argyl	2:45pm
8/22	S. Lehigh @ Pen Argyl	2:45pm
8/23	Pen Argyl @ Wilson	2:45pm
8/24	Pen Argyl @ Saucon Valley	2:45pm
8/29	Salisbury @ Pen Argyl	2:45pm
8/30	Pen Argyl @ NDGP	2:45pm
9/1	Palmerton @ Pen Argyl	2:45pm
9/6	Pen Argyl @ Moravian	2:45pm
9/8	Northwestern @ Pen Argyl	2:45pm
9/12	Pen Argyl @ Bangor	2:45pm

## Bangor (0-0) PA (0-0) Boys CC

9/7	Wilson, Southern Lehigh, Salisbury, Pen Argyl, Catasauqua @ Bangor	4:00pm
9/13	Saucon Valley, Pen Argyl, Palisades, Notre Dame G.P., Moravian Academy, Bangor @ Wilson	4:00pm
9/20	Wilson, Palmerton, Northwestern, Northern Lehigh, Bangor @ Pen Argyl	4:00pm
9/27	Wilson, Southern Lehigh, Pen Argyl, Catasauqua, Bangor @ Salisbury	4:30pm
Tue 10/4	Wilson, Saucon Valley, Pen Argyl, Notre Dame G.P., Moravian Academy, Bangor @ Palisades	4:00pm
10/11	Wilson, Pen Argyl, Palmerton, Northwestern, Bangor @ Northern Lehigh	4:00pm

## Bangor (0-0) PA (0-0) Girls CC

9/7	Wilson, Southern Lehigh, Salisbury, Pen Argyl, Catasauqua @ Bangor	4:00pm
9/13	Saucon Valley, Pen Argyl, Palisades, Notre Dame G.P., Moravian Academy, Bangor @ Wilson	4:00pm
9/20	Wilson, Palmerton, Northwestern, Northern Lehigh, Bangor @ Pen Argyl	4:00pm
9/27	Wilson, Southern Lehigh, Pen Argyl, Catasauqua, Bangor @ Salisbury	4:30pm
Tue 10/4	Wilson, Saucon Valley, Pen Argyl, Notre Dame G.P., Moravian Academy, Bangor @ Palisades	4:00pm
10/11	Wilson, Pen Argyl, Palmerton, Northwestern, Bangor @ Northern Lehigh	4:00pm

## Bangor Girls Tennis (0-0)

8/23	Bangor @ Salisbury	4:00pm
8/24	Pen Argyl @ Bangor	4:00pm
8/31	S. Lehigh @ Bangor	4:00pm
9/1	NDGP. @ Bangor	4:00pm
9/6	Bangor @ Moravian	4:00pm
9/8	Saucon Valley @ Bangor	4:00pm
9/12	Bangor @ Wilson	4:00pm
9/14	Bangor @ Palisades	4:00pm
9/19	Bangor @ Saucon Valley	4:00pm
9/21	Wilson @ Bangor	4:00pm

## Pen Argyl Girls Tennis (0-0)

8/22	Moravian A @ Pen Argyl	4:00pm
8/24	Pen Argyl @ Bangor	4:00pm
8/29	Wilson @ Pen Argyl	4:00pm
8/31	Pen Argyl @ NDGP.	4:00pm
9/1	Palisades @ Pen Argyl	4:00pm
9/6	Pen Argyl @ Saucon Valley	4:00pm
9/8	Pen Argyl @ Salisbury	4:00pm
9/14	S. Lehigh @ Pen Argyl	4:00pm
9/21	NDGP @ Pen Argyl	4:00pm
9/26	Pen Argyl @ Palisades	4:00pm