

**Don't pass on your mammogram.**

Schedule yours today at the Health Center at Bangor.

Schedule now

**Lehigh Valley  
Health Network**

NEWS TODAY NOT NEXT WEEK

# Slate Belt Town Topics

## World War II Weekend in Jacobsburg



This actor at the World War II weekend at Jacobsburg portrays a paratrooper with a parachute in hand ready to jump from a partially reconstructed fuselage of a C-47 plane which was used to drop 13,000 troops for the Normandy Invasion in France on D-Day of June, 1945. Photos: Larry Cory .... [PHOTO GALLERY](#) - 37 photos.



The Mobile Canteen pictured above was located in York, PA during World War II. This photo and a replica of the “V” on top of the canteen were on display at the WWII weekend in Jacobsburg. Other Canteens like one in Bangor in 1943-44 collected and sent goods to soldiers serving abroad. The “V,” according to our research, originated with the BBC and was a rallying sign for resistance against Hitler. British Prime Minister Winston Churchill frequently flashed the “V” in public.



# Slate Belt Town Topics

[sbtopics@rcn.com](mailto:sbtopics@rcn.com)

June 28, 2022

[www.sbtopics.com](http://www.sbtopics.com)

## QUESTION OF THE DAY

Despite the negative connotations associated with its name, which flower is surprisingly hardy? The answer: Pansies.

Pansies are resilient in colder temperatures. They can withstand frost and bloom again after harsh winters. Pansies are “cool-season annuals” meaning they prefer cooler weather

and typically go dormant during hotter months. Accordingly, these cold-weather flowers are the birth flower of those born in February. Since purple pansies are some of the most popular variety, this plays off the hue of February’s birthstone: the amethyst. Since pansies are early bloomers, too, February babies just might be able to pluck a few during their birth month.

Pansies also occupy a symbolic role in literature and popular culture. The flower is often connoted with love and affection, largely as a result of their use in the love potion of Shakespeare’s *Midsummer Night’s Dream*. Historic references of pansies date back to their use in traditional Celtic herbal love remedies.

**Fun fact** - The name “pansy” comes from the French word, *pensee*, meaning thought or remembrance. Next time you’re thinking of a loved one, send ‘em a pansy!



## Happening Today

**Blue Mountain Library** - Open 10-12 & 6-8pm 7:00pm  
**Bangor Public Library** - Open 1-8 Washington Twp. Recreation - 7pm  
**Slate Belt Senior Center** - Open 8-4. Blue Valley Roseto Zoning - 7pm  
Farm Show Slate Belt YMCA - Open 6:00am - 8:00pm  
**Bangor Borough Council** - Workshop, Bee Hive, UMBT Zoning - 7pm

## Area Roadwork Today

**Pen Argyl Boro Road name: Pen Argyl Road** Between: PA 191 and Main Street. Lane restriction 09:00 AM To 02:00 PM with flagging. Start date: 6/27. Est completion date: 6/28

**Washington / Plainfield.** Road name: PA 191. Between: Sullivan Trail and PA 512. Lane restriction 09:00 AM To 02:00 PM with flagging. Start date: 6/27 Est completion date: 7/1

**Interstate 78 Between: Exit 67 (PA 412) and Exit 75 (To PA 611)** Lane restriction 07:00 PM To 06:00 AM in both directions for concrete repair work. Expect delays and please use caution when traveling in work zones. Start date: 6/27 Est completion date: 7/1

**Moore Township Road name: Scenic Drive Between:** Mountain View Drive and Bushkill Drive Lane restriction 09:00 AM To 02:00 PM with flagging. Start date: 6/27 Est completion date: 7/1

**Moore Township Road name: Point Phillips Road** Between: Scenic Drive and Mountain View Drive Lane restriction 09:00 AM To 02:00 PM restriction with flagging. Start date: 6/29 Est completion date: 6/29

## Support St. John’s Cemetery

St. John’s Cemetery is conducting their annual cemetery appeal for ongoing maintenance of the cemetery. Donations can be made to St. John’s Cemetery, PO Box 9 c/o Carol Hummel, Bangor, PA

## Sunny 77 Today Sunny 82 Tuesday

### National Weather Service Forecast

**Today,** Sunny, with a high near 77. Northwest wind 5 to 10 mph.

**Tonight,** Patchy fog after midnight. Otherwise, mostly clear, with a low around 52. Calm wind becoming north around 5 mph.

**Wednesday,** Sunny, with a high near 82. Calm wind becoming southwest around 5 mph in the afternoon.

**Wednesday Night,** Mostly clear, with a low around 59. Southwest wind around 5 mph becoming calm.

**Thursday,** Sunny, with a high near 86. Calm wind becoming west around 5 mph in the afternoon.

**Thursday Night,** Mostly clear, with a low of 63.

**Friday,** Sunny, with a high near 90.

**Friday Night,** Partly cloudy, with a low around 69.

**Saturday,** Showers likely and possibly a thunderstorm, mainly after 2pm. Partly sunny, with a high near 85. Chance of precipitation is 70%.

**Saturday Night,** Showers likely and possibly a thunderstorm.

**Air Quality:** **Good** (0-50 ) Bethlehem (27) Columbia N.J. (30)

**Pollen:** **0.2 Low** (Top Alergen (s) Grasses, Dock, Plantain

**UV:** **Very High Risk** (12-5) Peak 6.9 at 1:00 pm

## Slate Belt Weather

### ICYMI

(Click Below to Read)

<a href="#">June 27</a>	<a href="#">June 21</a>
<a href="#">June 26</a>	<a href="#">June 20</a>
<a href="#">June 25</a>	<a href="#">June 19</a>
<a href="#">June 24</a>	<a href="#">June 18</a>
<a href="#">June 23</a>	<a href="#">June 17</a>
<a href="#">June 22</a>	<a href="#">June 16</a>

## Recent Photo Galleries



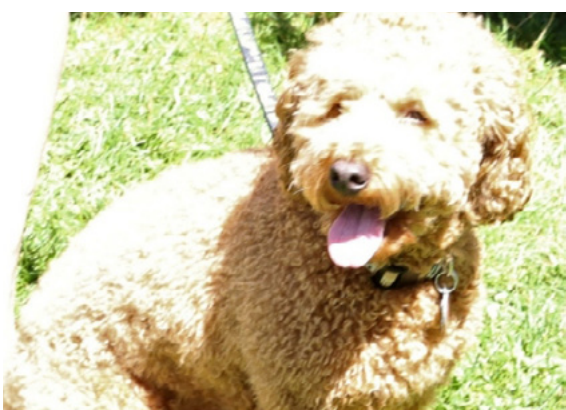
Bangor Tennis Clinic



LMBT Community Day



Pen Argyl Tennis Clinic



Wind Gap Shop n’ Stroll



# Slate Belt Town Topics

sbttopics@rcn.com

June 28, 2022

www.sbttopics.com

## REMOVE A TICK!



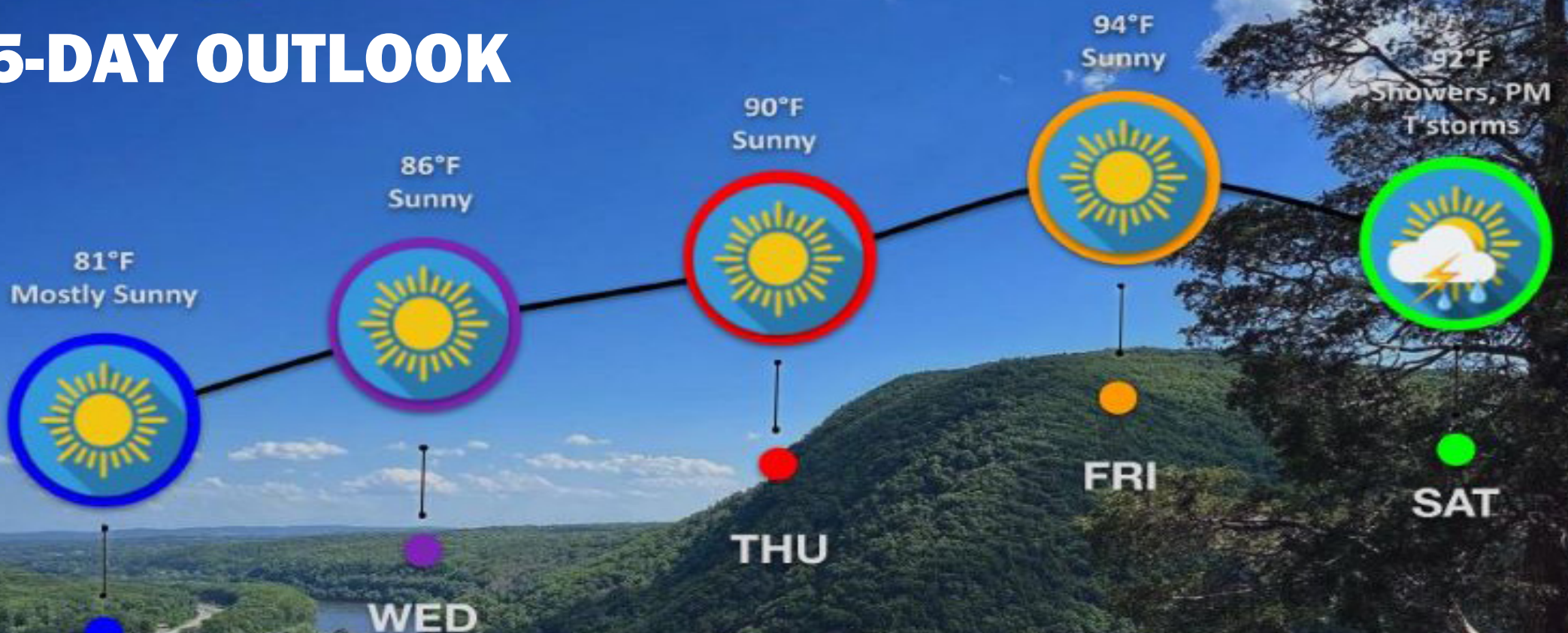
**USE FINE-TIPPED TWEEZERS** to grasp tick as close to skin's surface as possible

**PULL UPWARD** with steady, even pressure

**THOROUGHLY CLEAN** bite area and hands

**DISPOSE OF LIVE TICK** — never crush a tick with your fingers

## 5-DAY OUTLOOK



A cold front continues to push through the region this evening and into tonight. High pressure will build over the region through the rest of the workweek ushering in a summer-like pattern. A weak cold front will slide into the northern portions of the region Wednesday night, but high pressure will build back into the area behind it. A cold front brings more showers and storms into Saturday.

Pictured: Delaware Water Gap



**NATIONAL WEATHER SERVICE**  
OCEANIC AND ATMOSPHERIC ADMINISTRATION  
Philadelphia Mount Holly



## **PUBLISH YOUR EVENT**

To publish info about your event, e-mail [sbtopics@rcn.com](mailto:sbtopics@rcn.com) Please send in text form. Do not send photos of text.

**July 2**

## **Blue Valley Tractor Pull**

The New Penn Jersey Tractor Pullers Association Inc. Season Opener has been rescheduled at the Blue Valley Farm Show 707 American Bangor Road, Bangor Saturday July 2nd, 2022. (Time TBA) Registration Closes 30 minutes before start. The actual running order will be posted the day of event at registration Weight Transfer Machine by Crouse Sled Rental \$10 General Admission, Kids under 12 Free - \$20 hook fee for competitors. All Classes Pay standard NPJ Purse (like at Plainfield) - No Trophies

**July 7**

## **Weekly Weeders**

Thursday, July 7, 14, 21, & 28 at 8:30am to 10:30am



Save when you insure your home and auto with ERIE. You can have superb insurance coverage, outstanding service, great rates and discounts too. Take advantage of ERIE's multi-policy discount and we're willing to bet your tail will be waggin'. Also ask us about ERIE's other available discounts.



**Robin Tinsley**

Sabatino Insurance Agency Inc  
17 S Robinson Ave  
Pen Argyl, PA 18072-1765  
[ROBIN@SABATINOINS.](mailto:ROBIN@SABATINOINS.)  
610-863-6033

Discounts, rates and coverages vary by state and are subject to eligibility and applicable rates and rules. ERIE® Insurance services are provided by one or more of the following insurers: Erie Insurance Exchange, Erie Insurance Company, Erie Insurance Property & Casualty Company, Flagship City Insurance Company and Erie Family Life Insurance Company (home offices: Erie, Pennsylvania) or Erie Insurance Company of New York (home office: Rochester, New York). Not all companies are licensed or operate in all states. Not all products are offered in all states. Go to [erieinsurance.com](http://erieinsurance.com) for company licensure and territory information. 8/16/15

Interested in learning more about gardening with native plants? Volunteer to work alongside our education staff as they mulch, pull weeds, divide plants, and amend soil in the center's native plant garden. We provide instruction, tools, and weeding mats. Registration is required at <https://events.dcnr.pa.gov/search/events?order=date&search=jacobsburg>

**July 9**

## **Four B's Walk**

Saturday, July 9 at 10:00am to 11:30am

Need a break from the fast pace in a natural space? Borrow our nets, binoculars and ID books and join us for a fruitful walk as we find butterflies, bugs, birds, and blooms. Registration Required at <https://events.dcnr.pa.gov/search/events?order=date&search=jacobsburg>

## **Honeysuckle Hacking - Volunteer Event**

Saturday, July 9 at 1:00pm to 3:00pm

You may be surprised to find out that most of the shrubbery around the park are actually invasive honeysuckle species mixed with other woody-stemmed invasives. We will have a quick lesson on identification, ecological impacts, and management and then get geared up to lop, chop, and stop the spread. Tools and safety equipment will be provided. Registration is required at <https://events.dcnr.pa.gov/search/events?order=date&search=jacobsburg>

**July 10**

## **Weona Park Concert**

Large Flowerheads 6-8pm.

**July 14**

## **Weekly Weeders**

Thursday, 14, 21, & 28 at 8:30am to 10:30am

Interested in learning more about gardening with native plants? Volunteer to work alongside our education staff as they mulch, pull weeds, divide plants, and amend soil in the center's native plant garden. We provide instruction, tools, and weeding mats. Registration is required at <https://events.dcnr.pa.gov/search/events?order=date&search=jacobsburg>

**July 20**

## **Hike for Health**

Wednesday, July 20 at 5:30pm to 7:00pm

Get moving after work with a brisk hike at Jacobsburg! These guided monthly hikes are 2 to 2.5 miles over uneven terrain. Dogs are welcome to hike on a leash. Meet at the Visitor Center flagpole at 400 Belfast Road. Registration is not required. Join the email reminder list by contacting us at 610-746-2801 or [jacobsburgsp@pa.gov](mailto:jacobsburgsp@pa.gov).

**July 21**

## **Weekly Weeders**

Thursday, 21, & 28 at 8:30am to 10:30am

Interested in learning more about gardening with native plants? Volunteer to work alongside our education staff as they mulch, pull weeds, divide plants, and amend soil in the center's native plant garden. We provide instruction, tools, and weeding mats. Registration is required at <https://events.dcnr.pa.gov/search/events?order=date&search=jacobsburg>

**July 23**

## **Butterflies of Jacobsburg**

Saturday, July 23 at 10:00am to 12:00pm

Join local butterfly enthusiast Bill Grant for this walk through the fields of Jacobsburg in search of these beautiful insects. He'll show you how to quickly identify local species and the best places to look for them. Participants should wear comfortable shoes. A hat, bottled water sunscreen, binoculars, and camera are recommended. This program is best for families with children ages 8 and up. Registration is required.

## **Creek Critters**

Saturday, July 23 at 2:00pm to 3:00pm

Join us to learn about the fascinating creatures living in Bushkill Creek. Equipment to study these animals will be provided. Wear close-toed shoes that can get wet and expect to be in the water up to your knees. This program is best for families with children ages 5 and up. Registration is required

**July 24**

## **Weona Park Concert**

Philadelphia Funk Authority 6-8pm.

**Hometown**  
**BRAND CENTER**

APPLIANCE SALES, SERVICE & SUPPORT



**OVER 25**  
**BRANDS**

CLICK HERE FOR STORE INFO - [www.hometownsaves.com](http://www.hometownsaves.com)



## KLINE'S AUTO REPAIR

460 South First St. Bangor, Pa ~ 610-588-4140

[www.klinesautorepair.com](http://www.klinesautorepair.com)



**AUTO REPAIRS**  
**MAJOR or MINOR**  
*Bruce J. Kline*

## DALE ALBERT'S GARAGE Inc.



- Oil Change •
- Tires - Tune-Ups •
- Wheel Alignment •
- Major or Minor Repair •
- PA Emissions and Inspection •

**A to Z Performance Engines**

19 Blue Valley Drive, Bangor  
610-588-1902 Fax 588-1887  
[stodd86@frontier.com](mailto:stodd86@frontier.com)

## AT VCA, WE CARE

### SPECIAL OFFERS

Senior Citizen Tuesday and Friday  
(10% OFF non-discounted services)

VCA Care Club® Wellness Plans

### VCA AVH ANIMAL HOSPITAL

1027 Blue Valley Dr. Pen Argyl, PA 18072

610-863-7111



Check Us Out at  
[vcaavh.com](http://vcaavh.com)



### BUSINESS HOURS

Mon 8:00 AM - 7:00 PM • Tue - Wed 8:00 AM - 6:00 PM

Thurs 8:00 AM - 7:00 PM

Fri 8:00 AM - 5:00 PM • Sat 8:00 AM - 2:00 PM

## Calendar 2

**July 28**

### Weekly Weeders

Thursday, July 28 at 8:30am to 10:30am

Interested in learning more about gardening with native plants? Volunteer to work alongside our education staff as they mulch, pull weeds, divide plants, and amend soil in the center's native plant garden. We provide instruction, tools, and weeding mats. Registration is required at <https://events.dcnr.pa.gov/search/events?order=date&search=jacobsburg>

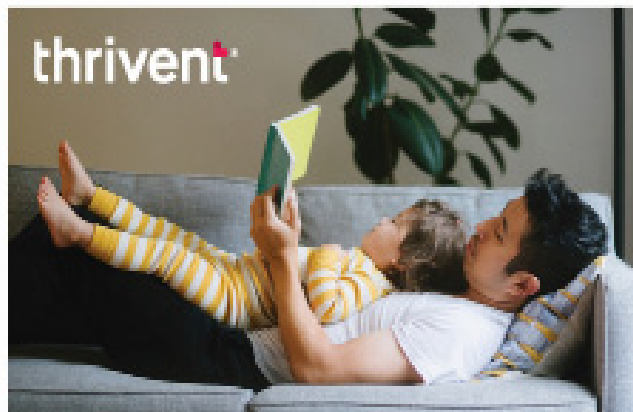
**Aug 5,6,7**

### Roseto Yard Sales

The annual Roseto Borough yard sale will be held the first weekend of August. day, Saturday and Sunday August 5th, 6th and 7th. The Borough waives the normal fees for this weekend, so setup and sell your treasures.

**August 7**

### Aonghus Oakley Ames



### A life worth living

Is a life worth insuring.

Live your life to the fullest knowing your family can continue the one you envisioned for them—even when you're gone. Purchase insurance today to protect their tomorrow.

Schedule time to discuss your needs today.

**Jewel Williamson-Burns, CLU®, RIC**  
Financial Associate  
18 Mauch Chunk St, Nazareth, PA 18064  
610-746-0344  
[jewel.williamson-burns@thrivent.com](mailto:jewel.williamson-burns@thrivent.com)  
[connect.thrivent.com/jewel-williamson-burns](http://connect.thrivent.com/jewel-williamson-burns)  
CA Insurance 0M53186

This is a solicitation for insurance. A licensed insurance agent/producer may contact you. This contract has exclusions, limitations, and terms under which the benefits may be reduced, or the contract may be discontinued. For costs and complete details of coverage, contact your licensed insurance agent/producer. Thrivent is the marketing name for Thrivent Financial for Lutherans. Insurance products issued by Thrivent. Not available in all states. Licensed agent/producer of Thrivent. [Thrivent.com/disclosures](http://Thrivent.com/disclosures) 206BBL RB-20

## Miller 4x4 Truck Show

The first Annual Aonghus Oakley Ames Miller 4x4 Truck Show to fund Blue Collar Scholarship in his memory is planned for the Blue Valley Farm Show 1:00 p.m. Sunday August 7. Tickets · \$10 - \$45 [www.eventbrite.com/e/310620603587](http://www.eventbrite.com/e/310620603587)

Fun! Trucks! Prizes! Food!

You can help pay it forward through the Blue Collar Scholarship!!! Check out [www.aoamfoundation.org/bluecollarscholarship](http://www.aoamfoundation.org/bluecollarscholarship) for information!

Your Donation/ticket will enter you to win an hourly door prize and will be used as your vote for the Best in Show 4x 4 Truck!

Your Truck Entry fee will get you a spot on the lot, a t-shirt and sticker with an opportunity to win one of three prize bundles!! Best in Show, Best 2014 and older, Best 2015 and newer!!!

Vendors will be on site, food, music! Come join us and have a good time and enjoy the 4 x 4's

**August 7**

### Weona Park Concert

Moss Henry and the Bryophytes 6-8pm.

**August 21**

### Weona Park Concert

Desire 6-8pm.

**July 3**

### Wind Gap Concert

Wind Gap Park Concert 6:00pm - Main St. Cruisers

**July 17**

### Wind Gap Concert

## Malachowski & Son, LLC

Mt.Bethel, PA

*Providing Quality Service for 30 Years...*

- Plumbing • Well Pumps
- Air Conditioning Service & Install
- Certified Water Treatment Installers
- Bathroom Remodel • New Home Construction
- Furnace Cleanings • Heating Service & Repairs



570-897-5443

[www.malachowskiandson.com](http://www.malachowskiandson.com)



1043 S Broadway, Wind Gap, PA 18091-0248

610 - 863 - 6100



CHEVROLET



### Calendar 3

Wind Gap Park Concert 6:00pm - New Individuals

**July 31**

## Wind Gap Concert

Wind Gap Park Concert 6:00pm -Steel Creek

**August 14**

## Wind Gap Concert

Wind Gap Park Concert 6:00pm - Inch and the Echoes

**August 27**

## Delaware Riverfest - Vendors, Food & More

Enjoy the day along the Delaware River shopping with vendors, delicious food, drinks, music, and more!

August 27, 2022 from 10AM to 3PM , 422 Delaware Avenue Portland, PA 18351

For vendor opportunities email [blueflameevents@yahoo.com](mailto:blueflameevents@yahoo.com)

Registration cost is \$30 Per 10 x 10 space

**August 28**

## Wind Gap Concert

Wind Gap Park Concert 6:00pm - Joey and the T-Birds

**Sept 11,12**

## Revolutionary War Weekend

Jacobsburg Revolutionary War Weekend September 10,11 10am - 3pm

**September 10**

## Roseto Flea Market

Come join us the Roseto Helping Hands Vendor and Flea Market Event September 10, 2022 from 9:00 a.m. to 4:00 p.m. at the Roseto Ball Park located at the corner of McKinley and Denisco Roads in Roseto. Food will be available for purchase!

If you wish to be a Vendor, please contact Darlene Dunbar via text at 908-619-7643 or email at [darlendunbar@entermail.net](mailto:darlendunbar@entermail.net).

**Sept 17-19, 2022**

## Hot Air Balloon Festival

2022 Lancaster Hot Air Balloon Festival Sep 17, 2022 At 6 Pm – Sep 19, 2022 At 9

The Lancaster Balloon Festival is a one-of-a-kind event in Lancaster County, Pennsylvania. Hosted in the village of Bird-in-Hand, PA the festival features the mass launch of dozens of big, beautiful balloon, family entertainment, fire works, delicious food, Amish goods, and even buggy rides!

**September 18**

## MDPH Open Show

An MDPH Oipen Show is scheduled for 9:00 a.m. Sunday, September 18 at 2557 Ackermanville Rd, Bangor,

**September 25**

## September To Remember Vendor Show

September To Remember Vendor Show is set for September 25 from 10-3 at Bangor Memorial Park, 90 eisenhart Blvd., Bangor.

Join them for a fun filled family day with over 50 vendors to shop with, fantastic food and drinks, sweet treats, and more! Beer, wine & sangria will also be available.

Sleggy's Axe House will be set up for patrons to practice their axe throwing.

Magician Mary: Mysterrio will be doing a magic show, and there will be free face painting! you won't want to miss this



**WALDEN III**  
*Personal Care Residence for Seniors*



Private Rooms:  
\$2330, \$2455 and  
\$2540 per month  
  
325 N. BROADWAY  
WIND GAP, PA  
  
Visit our website for rates and  
services at: <http://walden-3.com>

*Just the  
right  
amount  
of care  
at the  
right  
price*



1-800-724-4795 • 610-863-7059

**Read The  
Town Topics  
Published  
Everyday  
On Facebook  
(5,000 ends)  
Instagram  
LinkedIN  
Twitter and  
[www.sbttopics.com](http://www.sbttopics.com)**

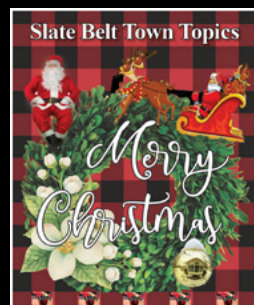
## RICHARD M. SHAPLIN FINANCIAL SERVICES



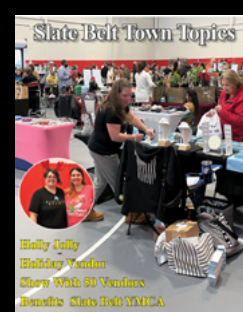
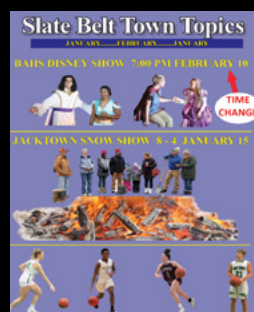
610-559-5197  
308 Spring Garden Street • Easton, PA 18042  
*Securities offered through Royal Alliance  
Associates, Inc., Member FINRA, SIPC.*

# Slate Belt Town Topics

**Read the Town Topics With Fresh News  
Everyday at These Sites.....**



**Slate Belt Town Topics @ Facebook  
Slate Belt Town Topics @ Instagram  
Slate Belt Town Topics @ LinkedIn  
Slate Belt Town Topics @ Twitter  
[SlateBeltTownTopics.com](http://SlateBeltTownTopics.com)  
Larry Cory @Facebook**





# Slate Belt Church Information



## Christ Presbyterian Church of The Slate Belt

332 Kennedy Drive, Bangor

[www.christpcsb.org](http://www.christpcsb.org)

More info 610-588-4864.

E-mail: [info@christpcsb.org](mailto:info@christpcsb.org).

**Sunday Worship, 10:00 a.m.** (Until 9/11)

in-person/Zoom/Facebook Live.

For more info: 610-588-4864.

## Flicksville UCC

1337 Lower South Main St., Bangor

Pastor Ken Hess 610-588-4648

[www.flicksvilleucc.com](http://www.flicksvilleucc.com)

**Summer Worship at 10 AM**  
following social distancing guidelines

## Trinity Lutheran Church

404 Broadway Bangor (610-588-2023)

[telcbangor@frontier.com](mailto:telcbangor@frontier.com)

Website: [www.tlcbangor.com](http://www.tlcbangor.com)

Sunday worship 10:30 a.m.

**Holy Communion:** First and Third Sundays

**Refreshments after. Masks optional.**

## East Bangor UMC

136 W. Central Ave. (Rt.512) East Bangor

**Sat. June 25** - 8pm AA Meeting

**Sun June 26** -9:30 a.m. Worship Service

(Live & on Zoom) 10:45 Fellowship Hour

(For Zoom, go to [ebumc.org](http://ebumc.org) to sign in)

## First United Methodist Church of Bangor

Pastor Elisandra Garcia - 610-588-4673

55 North Third Street, Bangor PA

11:00am service (Communion First Sunday)

## Christ Evangelical Lutheran Church

703 South Delaware Drive Mt. Bethel,  
18343

<http://www.celcpa.org/>

Email: [celcpaorg@yahoo.com](mailto:celcpaorg@yahoo.com)

610-588-7056

**Worship:** Sundays 9:00 a.m.

**Holy Communion:** First and Third Sunday

**Toddler Sunday School:** Sept-May 10:15

## Richmond United Methodist Church

Rev. Peter Jamieson, Pastor

<http://richmondumc.com/>

8538 Delaware Dr, Bangor, PA 18013

610.588.7317 | [richmondumc@epix.net](mailto:richmondumc@epix.net)

**Sunday Worship** - Weekly at 10:00 a.m.

## Grace Lutheran Church

5907 Sullivan Trail, Nazareth Pa 18064

[www.gracebelfastpa.org](http://www.gracebelfastpa.org) 610-759-9080

Email: [gracebelfast@rcn.com](mailto:gracebelfast@rcn.com)

**June 26** - 9:00 a.m. -3rd Sunday after

Pentecost, Service of the Word

## Mt. Bethel Abstract

Complete Title Insurance Services

**Susan McKean**

President

3013 N. Delaware Drive

Mt. Bethel, PA 18343

Phone: 570-897-9047

Fax: 570-897-9048

Toll Free: 888-325-2433

[www.mountbethelabstract.com](http://www.mountbethelabstract.com)



SERVING THE  
SLATE BELT &  
LEHIGH VALLEY

**JOHN T. SCHIMMEL**

PUBLIC ACCOUNTANT

1400 NORTHAMPTON ST. EASTON, PA 18042

Phone: (610) 253-4000 q Fax: (610) 258-FAX4

E-Mail: [john\\_schimmel@yahoo.com](mailto:john_schimmel@yahoo.com)

**Duke's**  
Sporting Goods

Authorized  
 Dealer

Owner  
Duke Bloodworth  
22 Broadway  
Bangor, PA 18072

## Team Sports Equipment And Uniforms

- Work & Occupational Wear
- Screen Printing
- Embroidery Services
- Digital Color Printing

Banners, Decals &  
WALL BANGERZ,  
Wall Posters  
(FATHEAD TYPE)

COACHES & PARENTS SAVE TIME & \$\$\$!  
VOLUME DISCOUNTS ON ACCESSORIES & EQUIP

"GOAL POSTS TO SOCKS AND EVERYTHING IN BETWEEN"



Phone 610-588-2958 Fax 610-588-8461

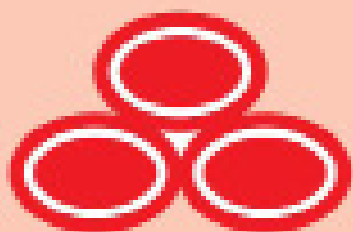
E-Mail: [dukessports@fastnet](mailto:dukessports@fastnet)



**Church Worship Times And Schedules Are Public Service Announcements Published Free of Charge by The Slate Belt Town Topics**

E-Mail Information to

[sbtopics@rcn.com](mailto:sbtopics@rcn.com)



**State Farm**

## Debbie Pettinari Agency

106 S. Broadway, Wind Gap, PA

**610-881-4433**

[www.debbieinsurespa.com](http://www.debbieinsurespa.com)

[debbie.pettinari.wz73@statefarm.com](mailto:debbie.pettinari.wz73@statefarm.com)





# Deadline Extended for 2021 Property Tax/Rent Rebate Program

The deadline for senior citizens and Pennsylvanians with disabilities to apply for rebates on rent and property taxes paid in 2021 has been extended to Dec. 31.

The Property Tax/Rent Rebate Program benefits eligible Pennsylvanians age 65 and older; widows and widowers age 50 and older; and people with disabilities age 18 and older. The income limit is \$35,000 annually for homeowners and \$15,000 annually for renters, and half of Social Security income is excluded.

The maximum standard rebate for homeowners is \$650, but supplemental rebates for certain qualifying homeowners can boost rebates to \$975. The Department of Revenue automatically calculates supplemental rebates for qualifying homeowners.

Claimants are encouraged to file their rebate applications online by visiting [mypath.pa.gov](http://mypath.pa.gov). No account is required. Applicants who still wish to file a paper application form may obtain Property Tax/Rent Rebate claim forms (PA-1000) and related information on the Department of Revenue's website or by calling 1-888-222-9190.

Rebates will be distributed beginning July 1, as required by law. The easiest way to check the status of your rebate after July 1 is to use the Where's My Rebate? tool. To check on the status of your claim, you will need your Social Security number, claim year and date of birth

## #BeatTheHeat tips



- drink plenty of water
- stay cool indoors
- use sunscreen of SPF 15 or higher
- limit outdoor activity
- avoid alcohol & caffeine
- wear light-colored, loose clothing
- check on older family & friends
- never leave kids, older adults or pets in unattended vehicles



## Maternal Mental Health Hotline

CALL OR TEXT  
1-833-9-HELP4MOMS  
(1-833-943-5746)

HHS.gov

### Heat Exhaustion

- Dizziness
- Nausea
- Weakness



### Heat Stroke

- Confusion
- Throbbing headache
- Unconsciousness



Drink water, move to cooler, air-conditioned, or shaded space

**CALL 911**, loosen or dampen clothing, use cool compress on forehead and neck

CS 330323-0

## 10 Early Signs and Symptoms of Alzheimer's

1. Memory loss that disrupts daily life
2. Challenges in planning or solving problems
3. Difficulty completing familiar tasks
4. Confusion with time or place
5. Trouble understanding visual images and spatial relationships
6. New problems with words in speaking or writing
7. Misplacing things and losing the ability to retrace steps
8. Decreased or poor judgment
9. Withdrawal from work or social activities
10. Changes in mood and personality



content credit: Alzheimer's Association

## PREVENT MOSQUITO-SPREAD DISEASE: AVOID MOSQUITO BITES



AVOID BITES AT  
DAWN & DUSK



USE FDA-REGISTERED  
INSECT REPELLENT



WEAR LONG SLEEVES  
& LONG PANTS



REMOVE STANDING  
WATER AROUND HOME



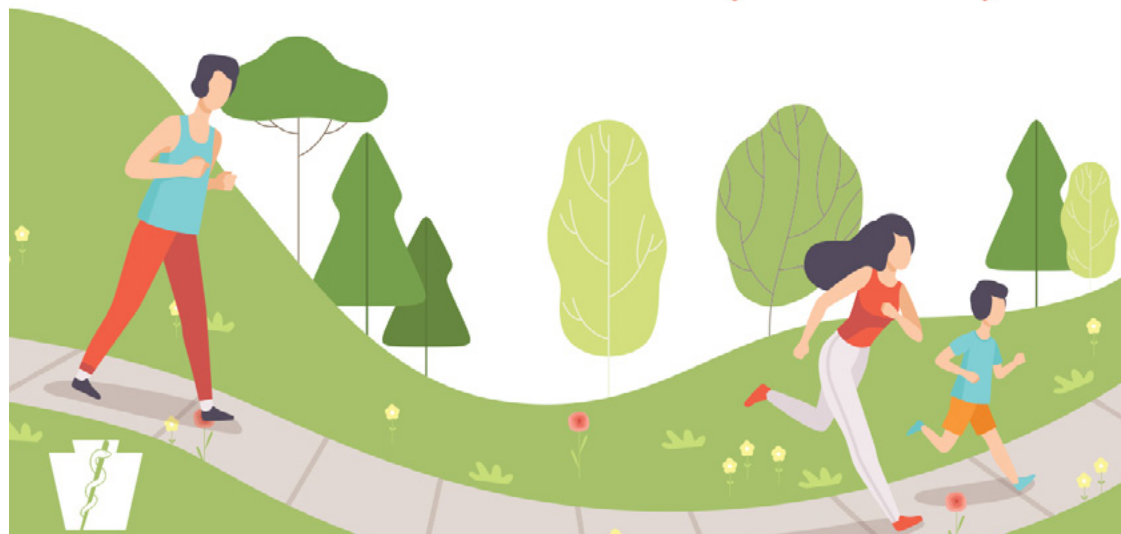




Tumble dry clothes on high heat for 10 minutes to kill ticks on dry clothing.



*Make exercise a family activity!*



## FOOD SAFETY TIPS

- **WASH** your hands with soap and water before preparing food.
- **SEPARATE** raw meats from other foods.
- **CLEAN** fruits and vegetables to remove dirt.
- **CHECK** internal temperature with a food thermometer.
- **REFRIGERATE** leftover foods promptly.



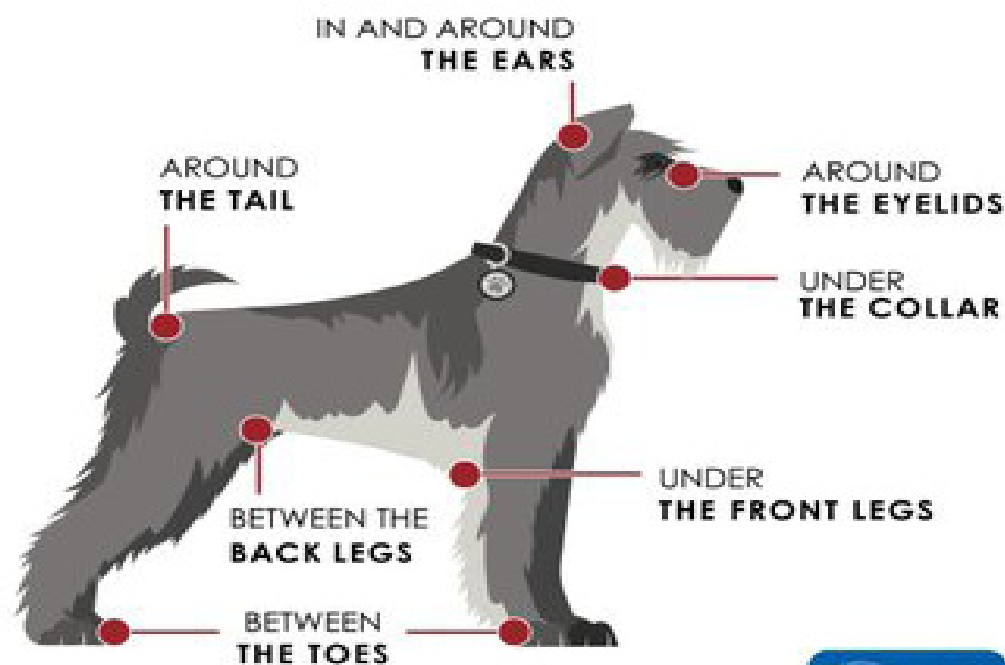
Spending **2 hours a week in nature** is associated with good health and wellbeing!

Aim for 60 minutes  
of physical activity  
**EVERY DAY!**

**NEVER LEAVE CHILDREN,  
OLDER ADULTS OR PETS  
IN A PARKED VEHICLE**



## WHERE TO CHECK YOUR PET FOR TICKS



**DRINK WATER**  
before you're  
thirsty to avoid  
heat-related illness!





# DID YOU KNOW

you can lose some of your hearing after a few minutes around these noises?



Centers for Disease Control and Prevention  
National Center for Environmental Health



Ambulance Sirens  
110-129 dB



Lawn Mowers  
80-100 dB

Fireworks  
140-160 dB



Always protect your hearing. Wear hearing protection such as earplugs or earmuffs.

## Ways to Help NATIVE BEES



- Plant native trees. Trees provide a large nectar source from their blossoms and habitat for some bees.
- Plant native plants that bloom during the spring, summer, and fall to provide a continuous food source.
- Avoid using herbicides, pesticides, and insecticides. Find organic ways to garden and remove pests.
- Provide water and habitat such as bare soil in your garden for ground-nesting bees, leave plant stems standing in winter, dead trees or fallen logs, or bee nesting houses.
- Participate in citizen science opportunities to help count bees like the Bumble Bee Watch, Great Sunflower Project, and more.
- Spread the word! Let others know how they can help.



## Tips for planting a POLLINATOR GARDEN

- Choose native plants which provide nutritional value for pollinators and require less maintenance
- Choose native plants that bloom at different times (early spring – late fall), providing food all season
- Choose plants with flowers of different sizes, shapes, and colors for the diversity of pollinators
- Plant at least 3 or more of one kind of plant together to provide larger drifts of color to attract pollinators
- Form a weed barrier by planting natives closer together instead of using mulch or landscape fabric
- Save garden clean up until spring! Pollinators overwinter in different life stages



# Mountain Laurel

## Pennsylvania State Flower Facts



Chosen as state flower in 1933 by Governor Gifford Pinchot



Shrub that grows 4 to 10 feet high and blooms late May through June



Not an easy to grow landscaping plant, has particular soil needs



All parts of shrub are toxic to people and animals

Host plant for the Laurel Sphinx Moth



Attracts butterflies, hummingbirds, and other pollinators



Considered one of the most beautiful native flowering shrubs



Provides shelter for birds and small mammals in winter



## Ways to Help Eastern MONARCHS



- Plant native nectar plants that bloom in the spring, summer, and fall in a sunny area.
- Plant the caterpillar host plant milkweed (butterfly weed *Asclepias tuberosa*, common milkweed *Asclepias syriaca*, swamp milkweed *Asclepias incarnata*).
- Avoid using herbicides and pesticides. Find organic ways to garden.
- Enhance monarch habitat by providing water and a place to shelter with dense patches of wildflowers and shrubs.
- Participate in citizen science opportunities where you can help track monarch sightings in spring and fall.
- Spread the word! Let others know how they can help.





# Slate Belt Town Topics



COMING SOON

